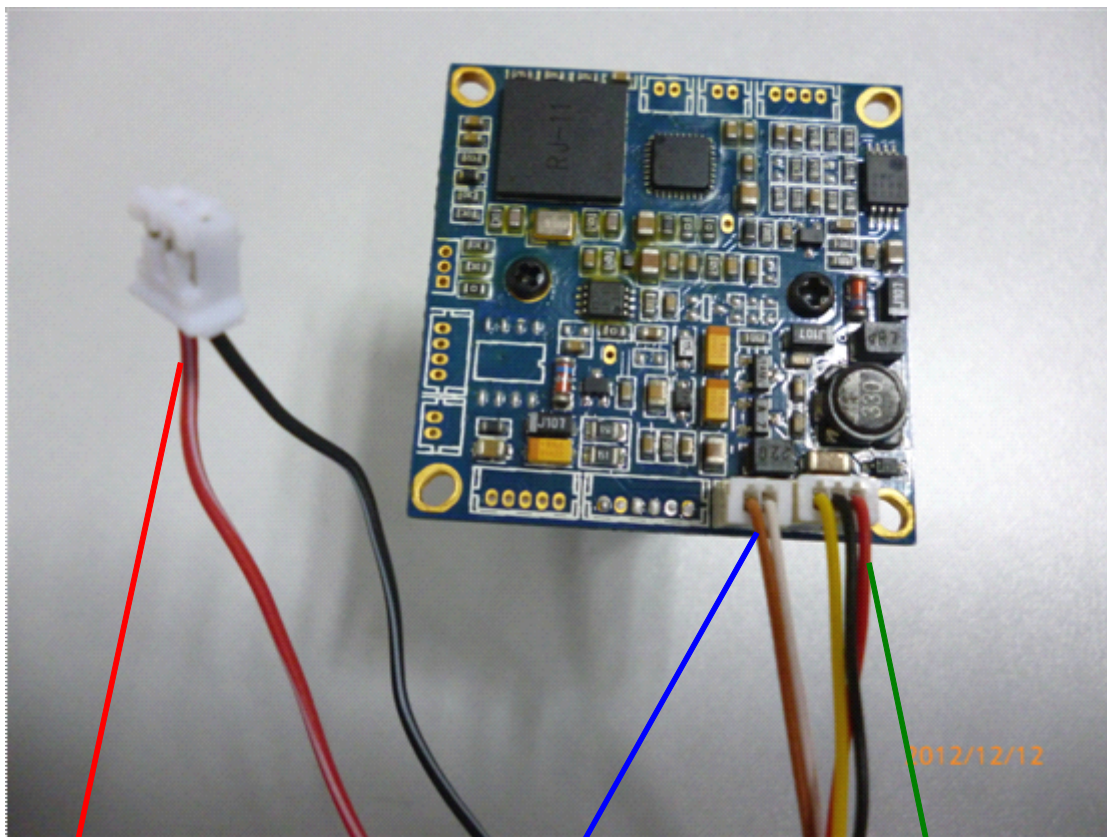


## Adjust 700 TVL IR Camera Board Image Effect

1. Use the OSD control cable, press the center button for 3-5 seconds to enter menu.
2. Press up / down button to choose "EXPOSURE", enter the sub menu, choose "BRIGHTNESS", the default value of it should be "40", please use the cable, press left / right button to change the value to be about "50".
3. Go to the main menu of "COLOR", enter sub menu to choose "WB MODE", press the enter button to enter next sub menu, choose R-Y GAIN & B-Y GAIN, the default value of them should be "128", change their value to be about "180".
4. Now you can check the image quality, should be bright and more strong color, but a little high noise.



**These 2 wires are for connect to IR camera's IR LED control board.  
Red - power +, black - power -.**

**These 2 wires are for the OSD menu**

**These 3 wires: yellow - video, black - power -; red - power +.**