

Change housing of our speed dome camera

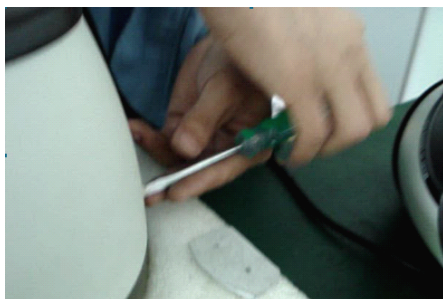
1. Put the PTZ on table stably, you can use the bulb in our packing carton to be the basis for PTZ, please refer to my picture



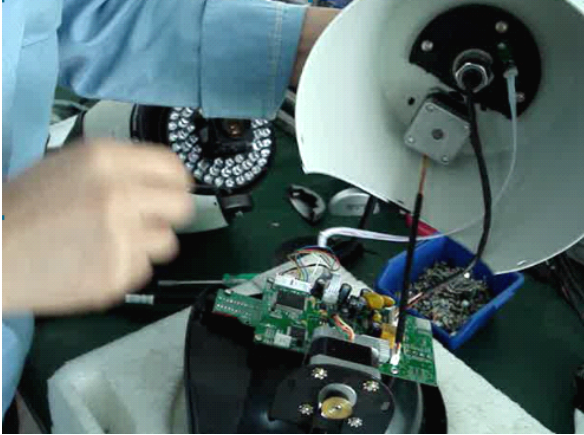
2. We need to take the bracket off, please take the screws off, refer to my picture, after you take off all screws on the bracket, you can easily take the bracket off.



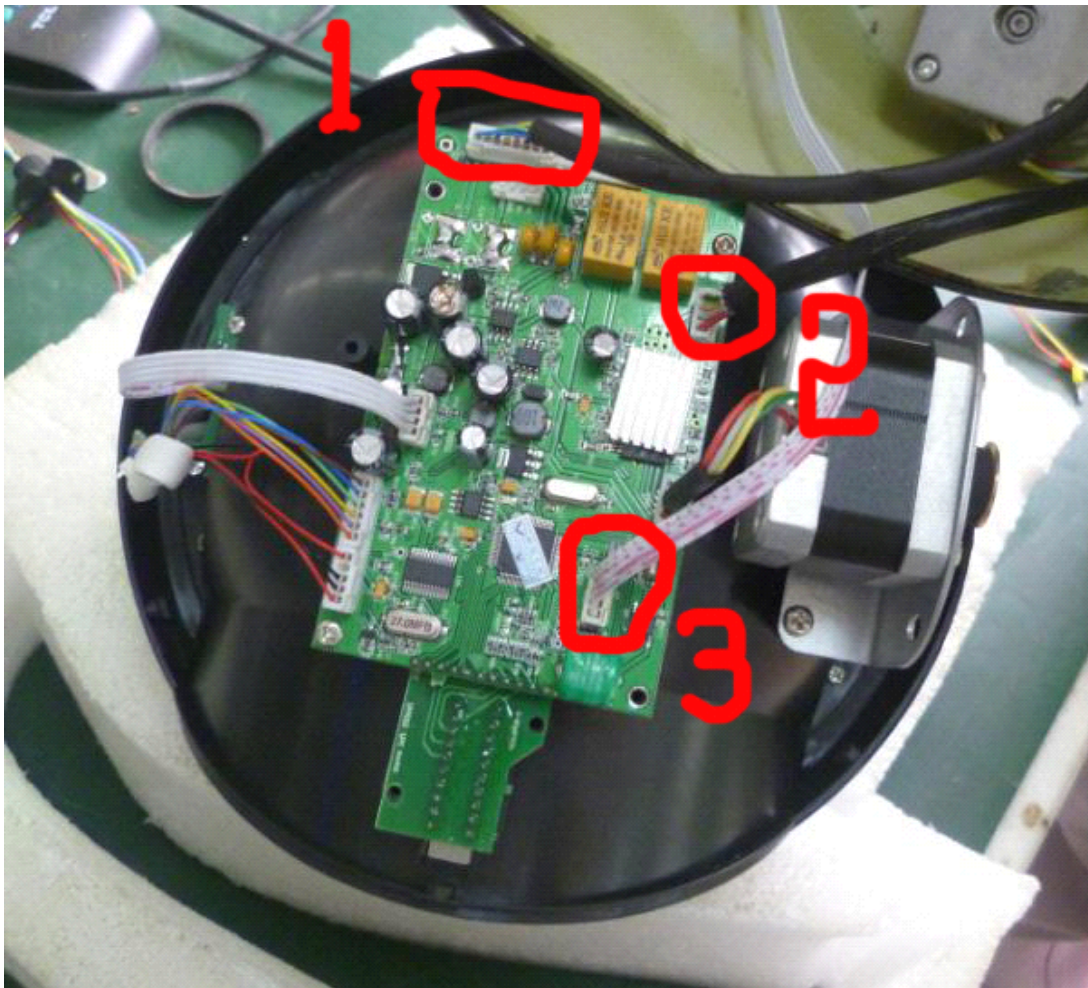
3. Now we need to open the PTZ's housing, we need to take all screws (generally 4 pcs) off from the housing, refer to my pictures.



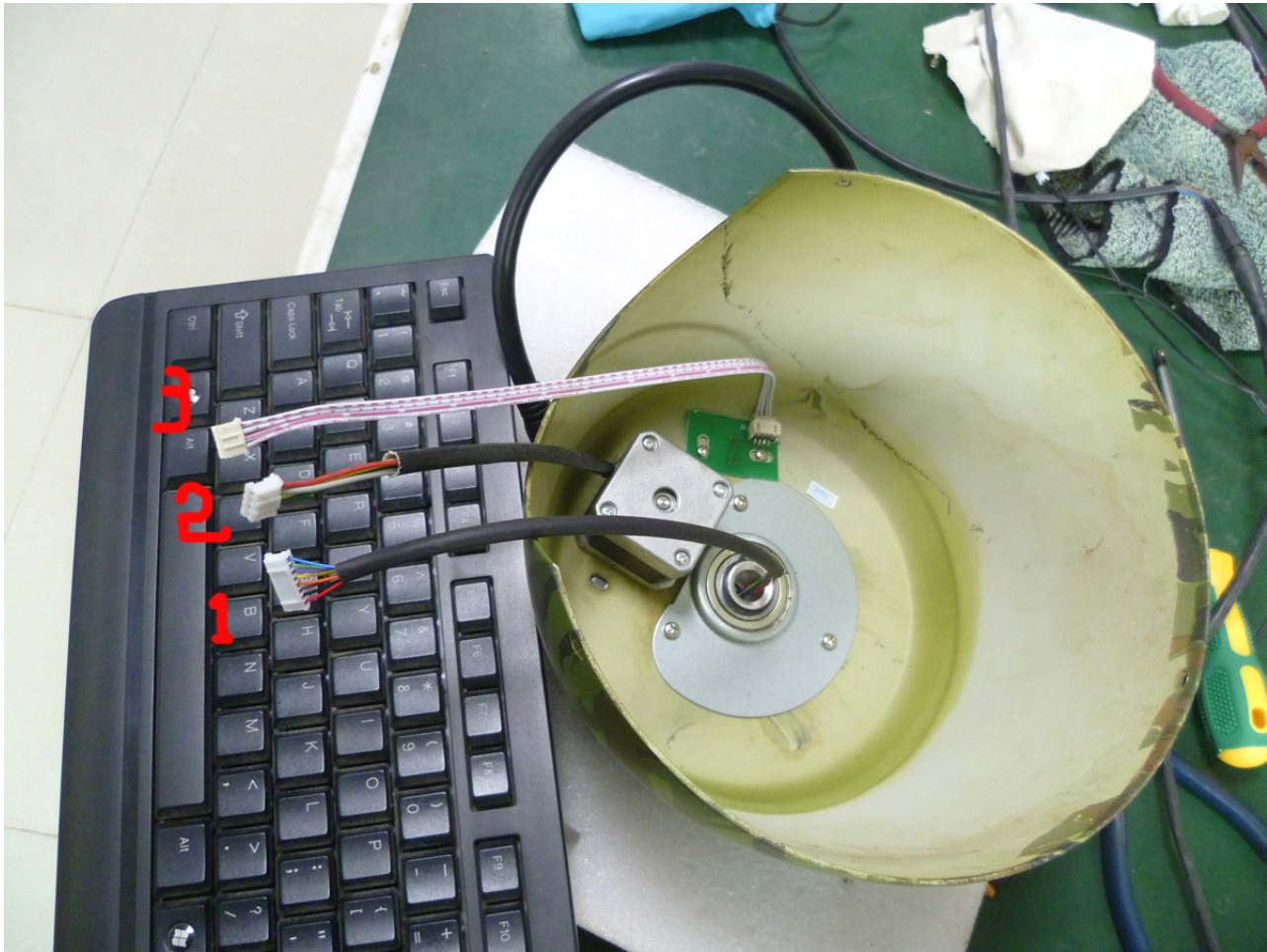
4. After you take off the PTZ's housing, you will see the decoder (main PCB board) on the top of ptz, but it is still connected to the housing via some wires, decoder is fixed by about 5 pcs screws.

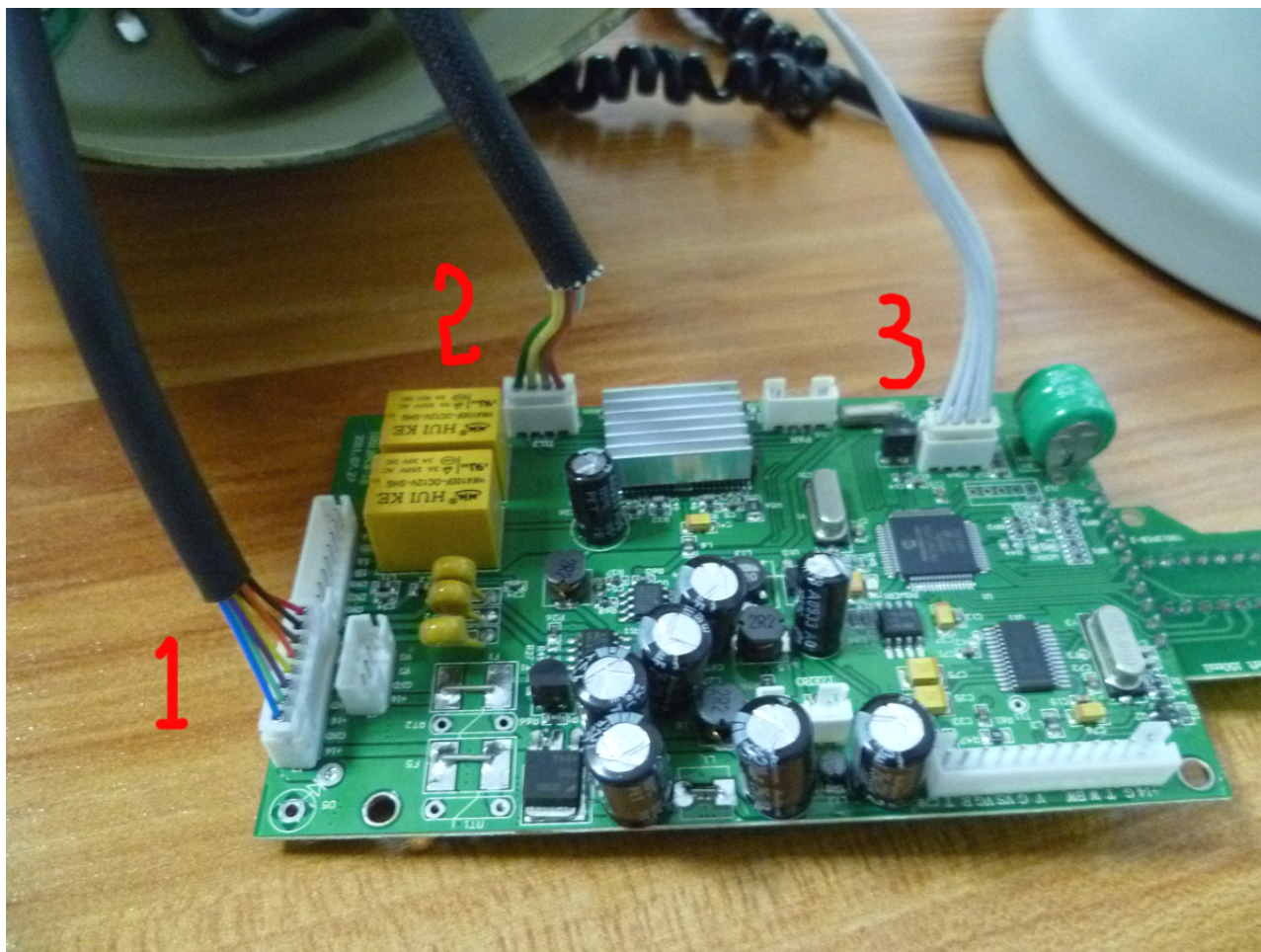


5. Now we need to take some wires on the decoder (PCB board) to change the housing. **Please must to remember every positions of every wires, because you need to connect the decoder again later.** Please take the 3 cables out that are as same as my following picture, when you change the new housing, you need to connect the 3 cables at new housing to these 3 positions, **please note, the cable NO.1, its position is the left socket near to the edge of decoder, but not the right socket.**



6. Now please cover the new housing to the PTZ, please be carefully, avoid to damage any cable. You must to connect the 3 cables of new housing to the decoder, please refer to my previous picture and the following picture.





7. Then please fix all screws that you took off from the old housing, then you finish the change, you can provide DC12V / 5A power to the PTZ to test it.