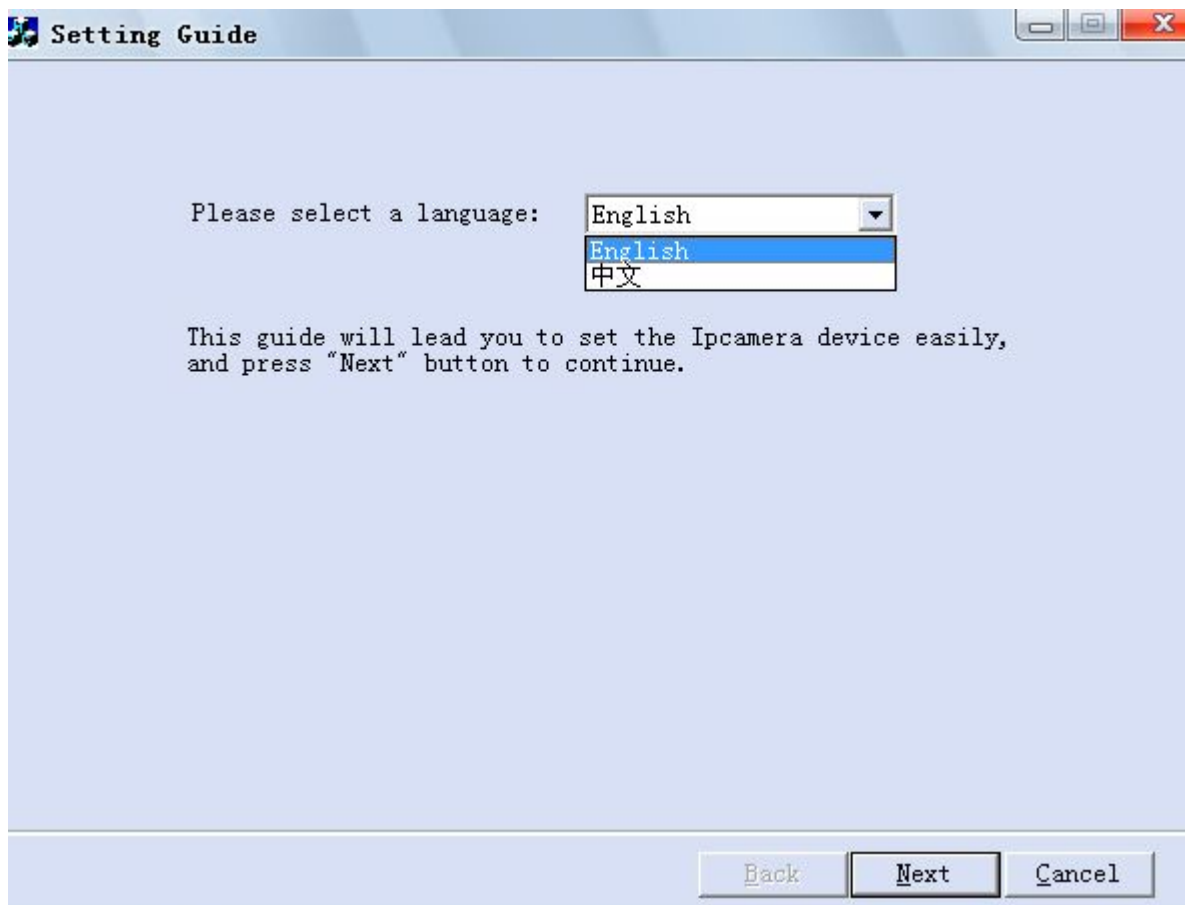


H Series HD IP camera IE operation

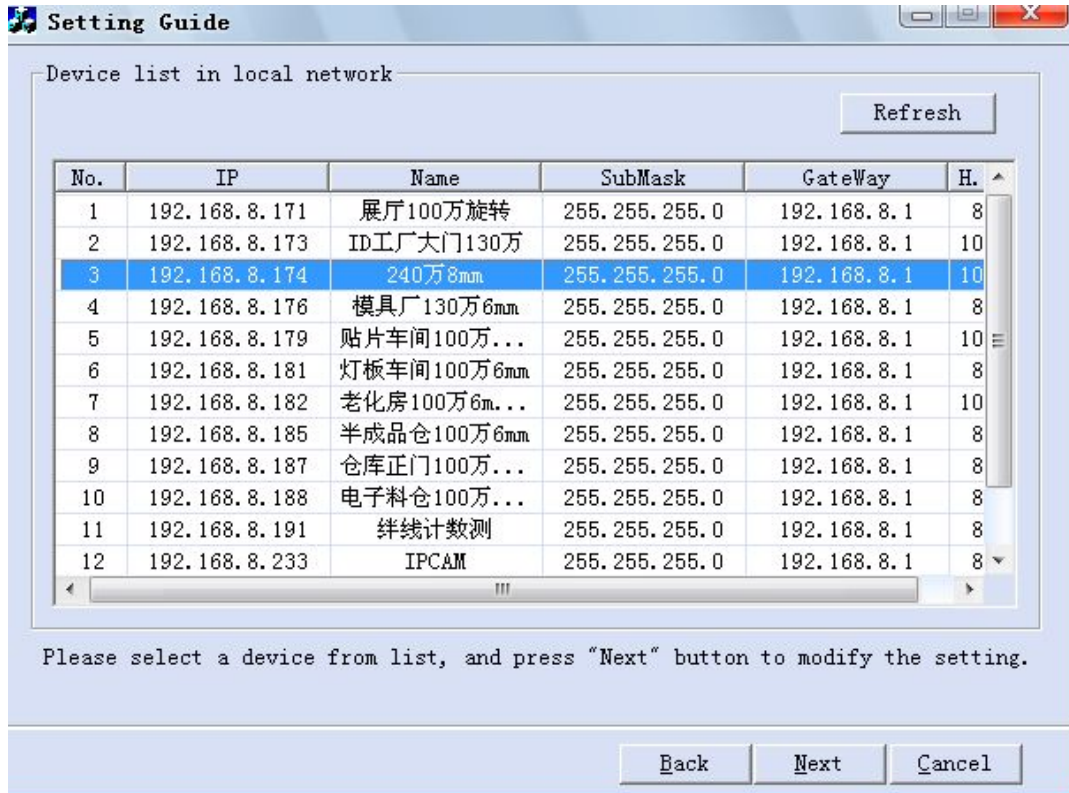
1. Use “search tool” to find the IPC’s IP address

Double-click to open H Series HD Camera "search tool" software, you can choose language as “ENGLISH”:

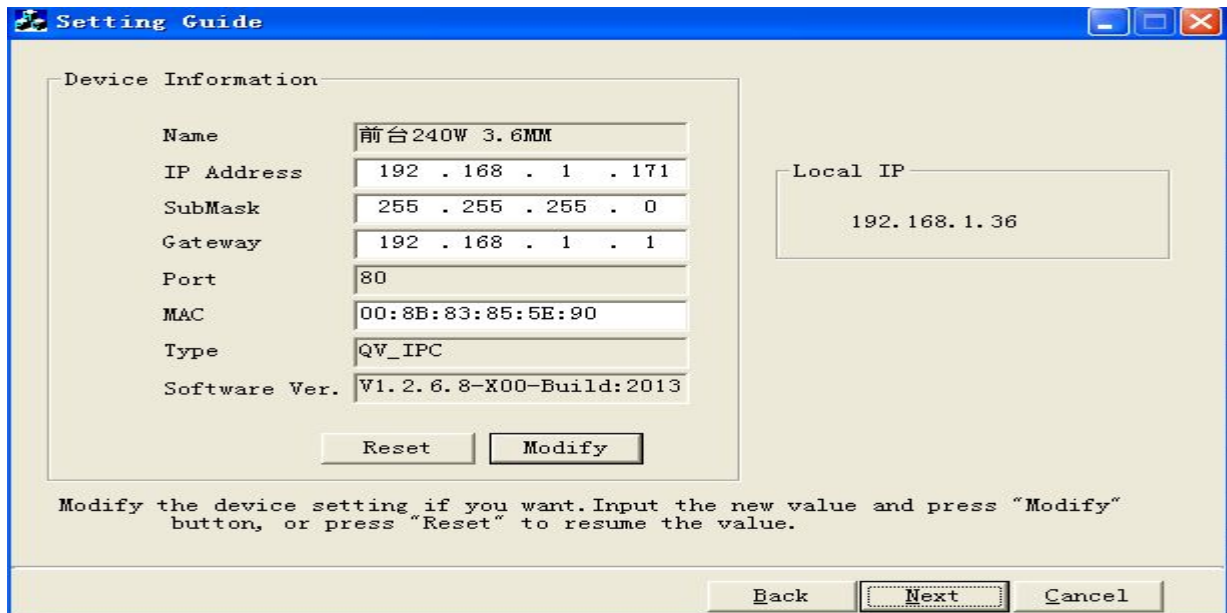


Then click "Next" button, then you will see a list of all IPC in your local network, now you can change the IP address of any camera in this list, steps:

(1) select a camera from the list. Click "Next" button as follows:



But you must set the camera IP to be in the same segment of your local network



After modifying the parameters of the IP Address, Sub mask code and Gateway, click "Modify" & "Next" buttons to save your settings.

When the window remind you to enter account name and password, please enter default information as follows:

Default account : admin

Default password : admin



A dialog box titled "Check" with a blue title bar and a close button (X) in the top right corner. The dialog contains two text input fields labeled "Account" and "Password". Below these fields is a checkbox labeled "remember". At the bottom of the dialog are two buttons: "OK" and "Cancel". Below the buttons, the text reads: "Please input the device's account and password."

Then please mark 'remember', after marking, when you want to change the next device's information, you don't need to input the account and password. At last please click OK and then will be as follows. This shows you have modified successfully.



2. Use Internet explorer software

Megapixel IP digital camera has built-in Web server system to support viewing pages, configuring the device and managing the device through web at the PC side.

Web client provides image browsing, parameter setting, PTZ control, system configuration, log query and other functional modules.

2.1 System login on IE

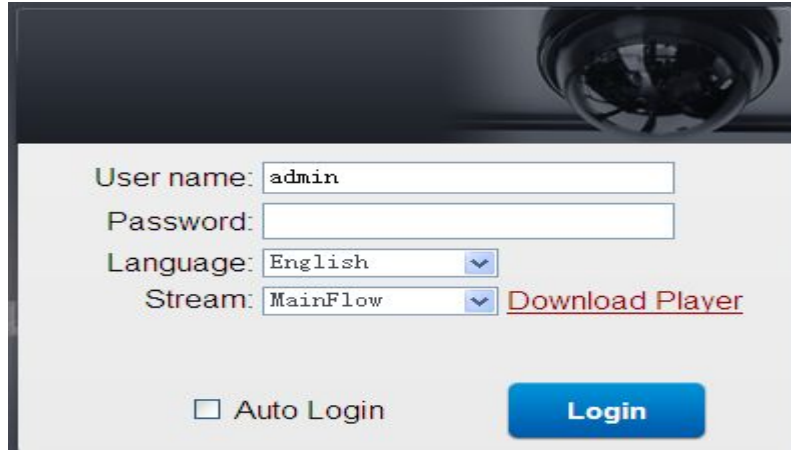
Login steps

1, When use a browser (Internet Explore) access the network camera for the first time, you must temporarily lower security settings so that the ActiveX components can be installed on the network, set steps:

(1) go to the View menu, Please select Tools- Internet Options - Security - Custom Level-ActiveX controls and plug-ins >, set the security level to low, and click Reset.

(2) Open the IE browser, input the camera's IP and press the Enter key, if you don't know the device's ip, please use "Search Tools" software and get the device's IP address.

(3) When visit the Web interface for the first time,there will be prompted to install the control, click to download and install the control, then refresh the Web interface, as the following:



The default user name: admin
password: admin.

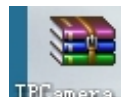
Languages :Chinese, English

Stream: main flow / Minor flow, this will affect video quality, especially for remotely view, we suggest you to choose sub stream, because main stream request the network situation of 2 ends to be very good, include upload bandwidth and download bandwidth, these 2 options have OCX-H264 and VLC-H264 two types, the default is OCX-H264.

After you log in, if you only see the screen like below image, no matter you will see the notification information or not,



This means you need to install an active-x, it can be download from the window right corner on top, see

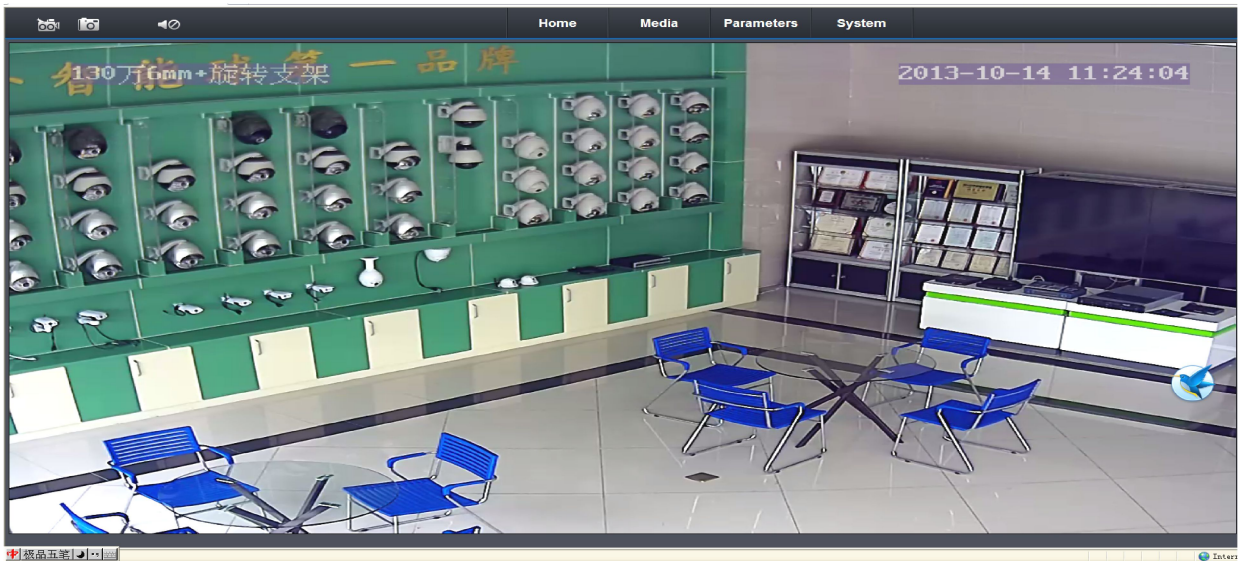


above image red line, after download you can find the file of IFCamera.a, when you install it, also can



choose language

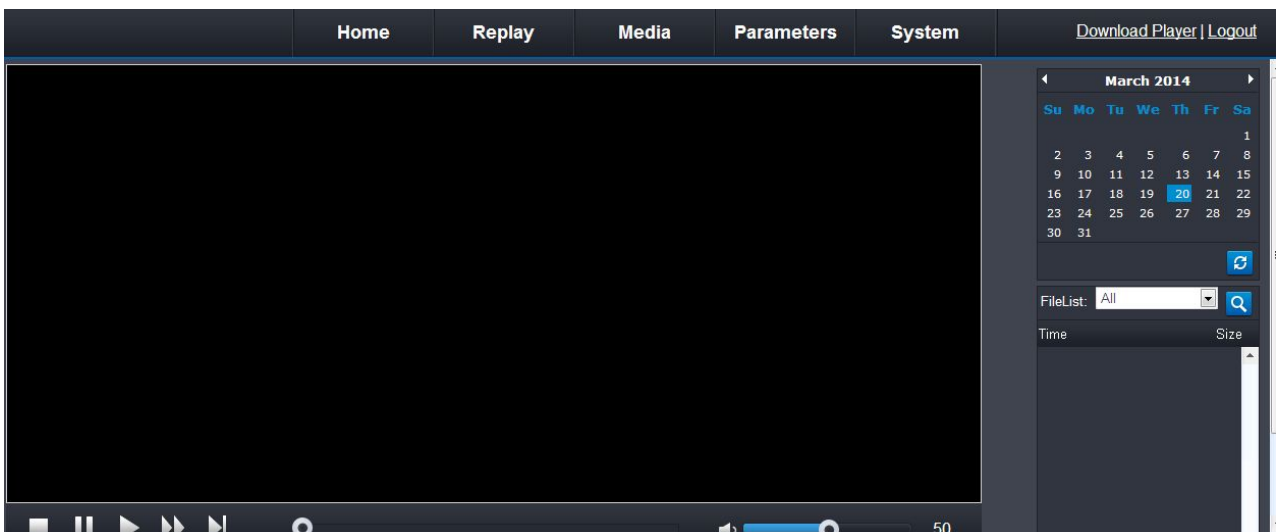
After install the active-x, please refresh the window, then you can enter the camera's video, below shows our company example:



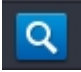
2.2 Brief introductions of functions operation on IE

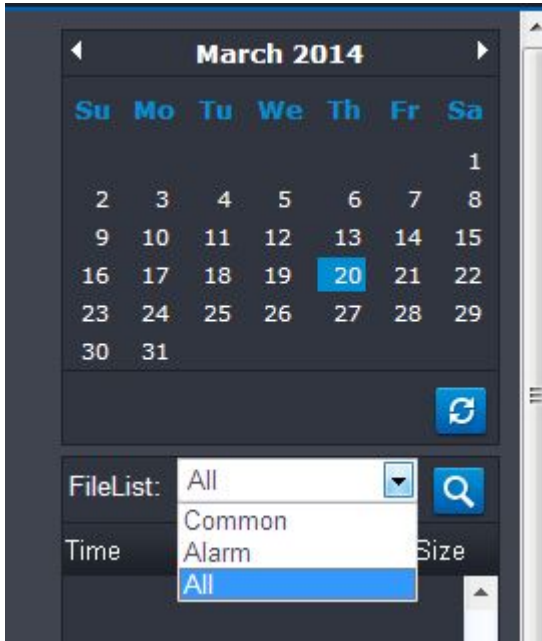
2.2.1 REPLAY:

After entering into IE end interface, click **【REPLAY】** the following picture will appear :

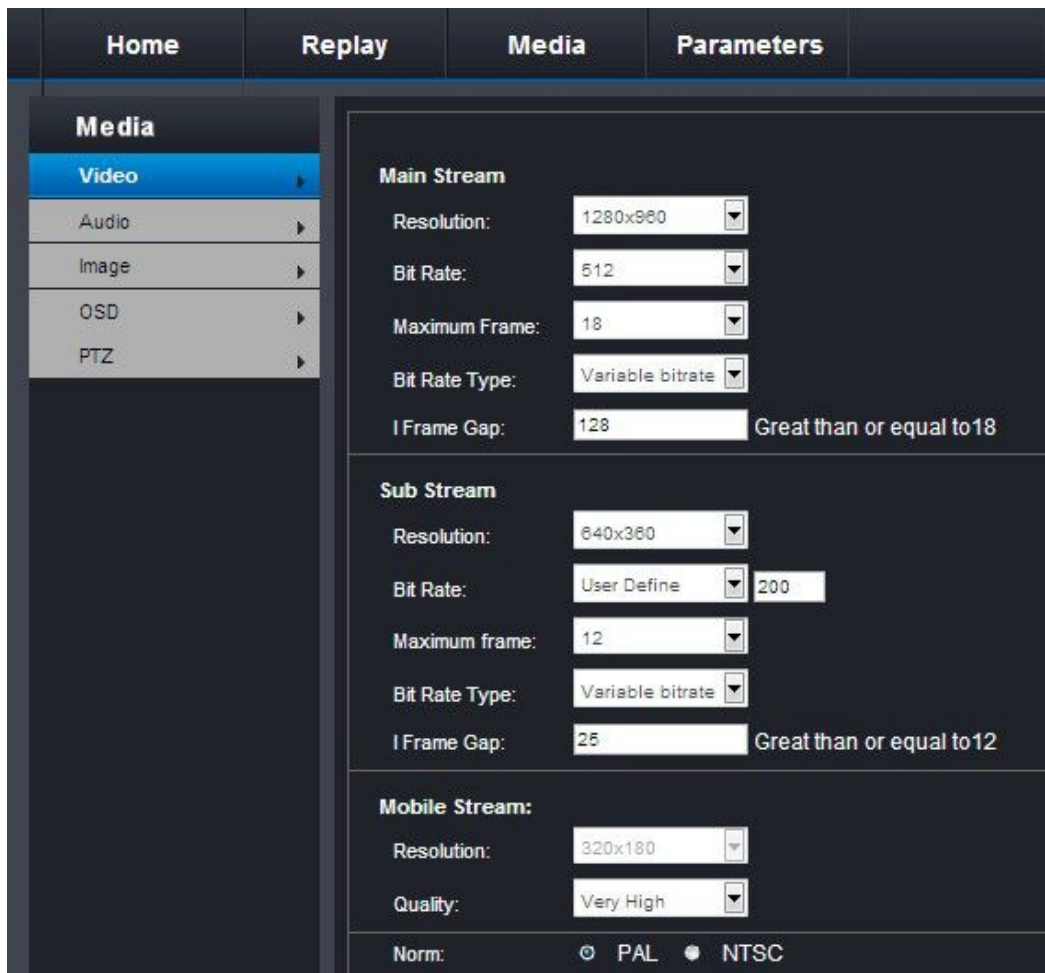


Only when you set recording video and with recording disk, you can use this function.

On the right calender, you can choose the date to check recorded video, click icon  and wait about 20 seconds, you can see the video list, double click it to replay.



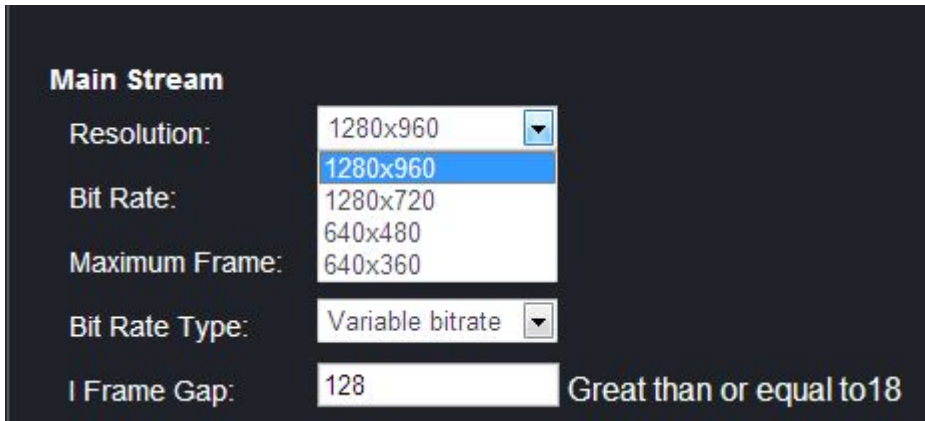
2.2.2 MEDIA SETUP:



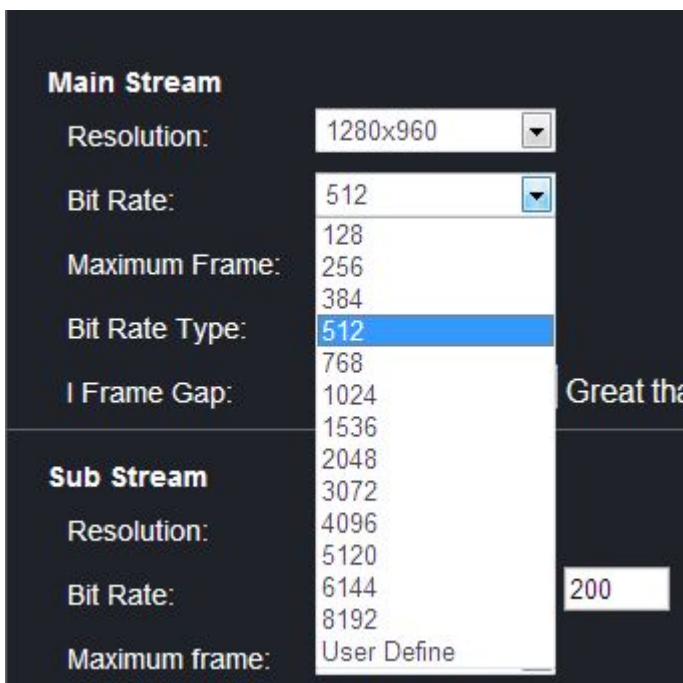
- VIDEO -

Main stream: this set mainly for view video in local network

Resolution -- set suitable stream, this is also depended on the camera's true resolution, not every camera have options of resolution as same as below image:

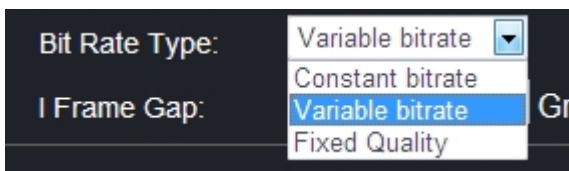


Bit rate -- click to choose suitable value, this will affect video quality and speed.



Maximum frame -- can choose 1 - 25

Bite rate type -- click to choose the type you want, we generally choose VARIABLE BITRATE

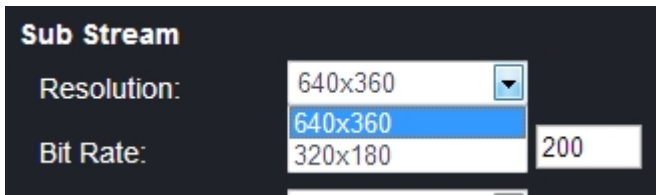


1 frame gap -- set suitable value, related to your video resolution and bit rate, quality, speed.

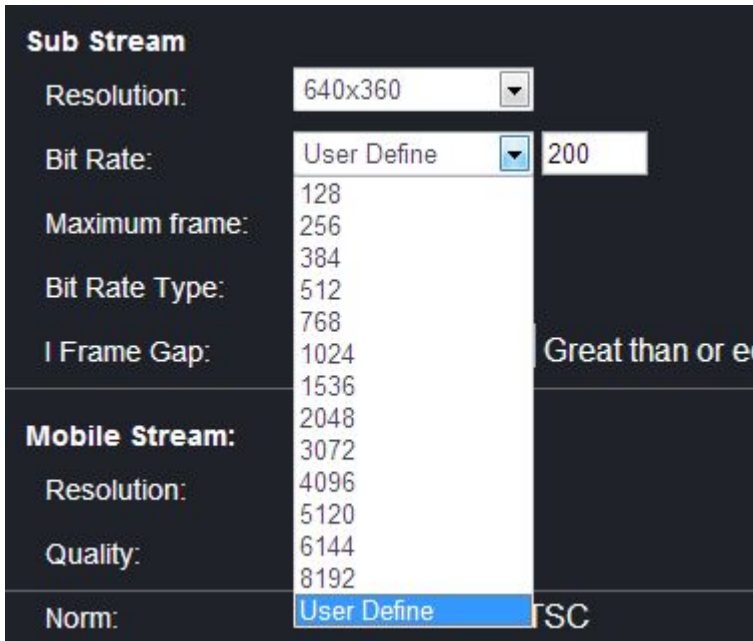


Sub stream : this set mainly for remote view the camera video.

Resolution -- set suitable stream, this is also depended on the camera's true resolution, not every camera have options of resolution as same as below image:

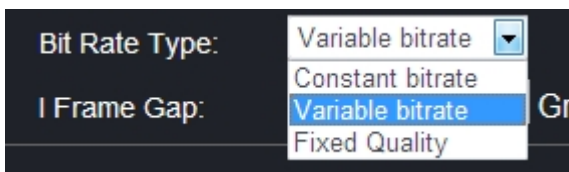


Bit rate -- click to choose suitable value, this will affect video quality and speed.



Maximum frame -- can choose 1 - 25

Bite rate type -- click to choose the type you want, we generally choose VARIABLE BITRATE



1 frame gap -- set suitable value, related to your video resolution and bit rate, quality, speed.



Mobile stream : this set mainly for view the camera video on smart phone.

Resolution -- this is decided your set of "QUALITY"

Mobile Stream:

Resolution: 320x180

Quality: Very High

Norm: PAL NTSC

Quality -- you can choose the level you want, this means video quality when you view on smart phone

Mobile Stream:

Resolution: 320x180

Quality:

- Very High
- Very High
- High
- Normal
- Low
- Very Low

Norm: PAL NTSC

Norm -- choose correct video signal according to your country standard.

After you finish these settings, please click "APPLY" to save the settings.

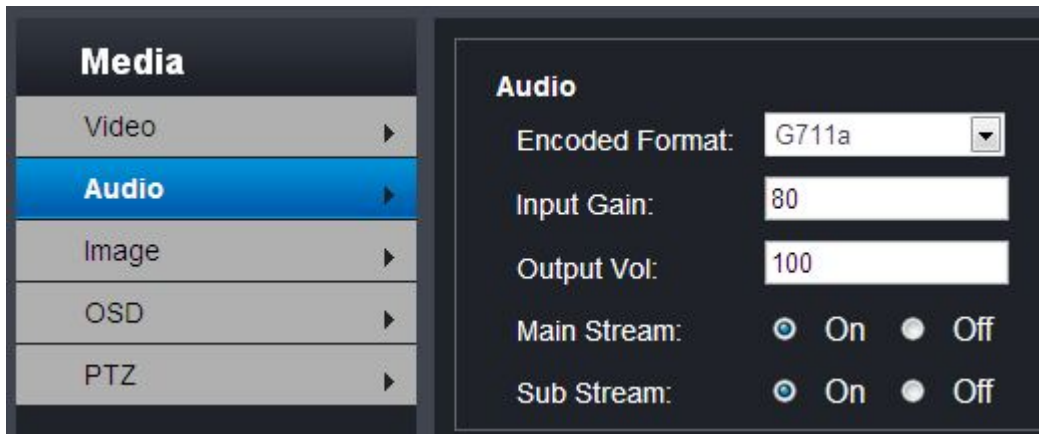
Mobile Stream:

Resolution: 320x180

Quality: Very High

Norm: PAL NTSC

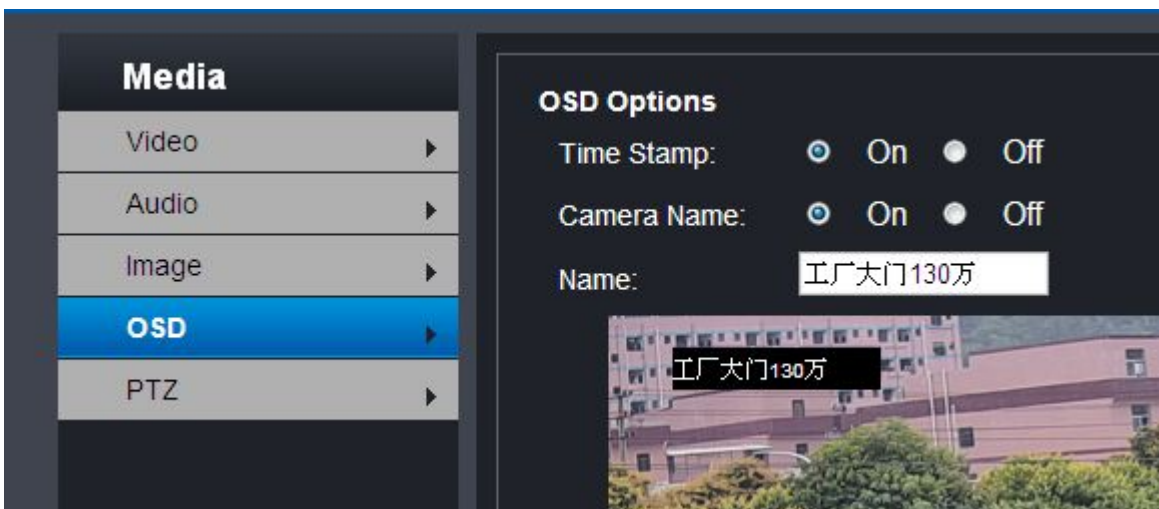
- **AUDIO** - set every options, then click “APPLY” to save the set.



- **IMAGE** - mainly for set image quality with WDR function.



- **OSD** - mainly for set display information on screen, set every functions, then click “APPLY” to save the set.



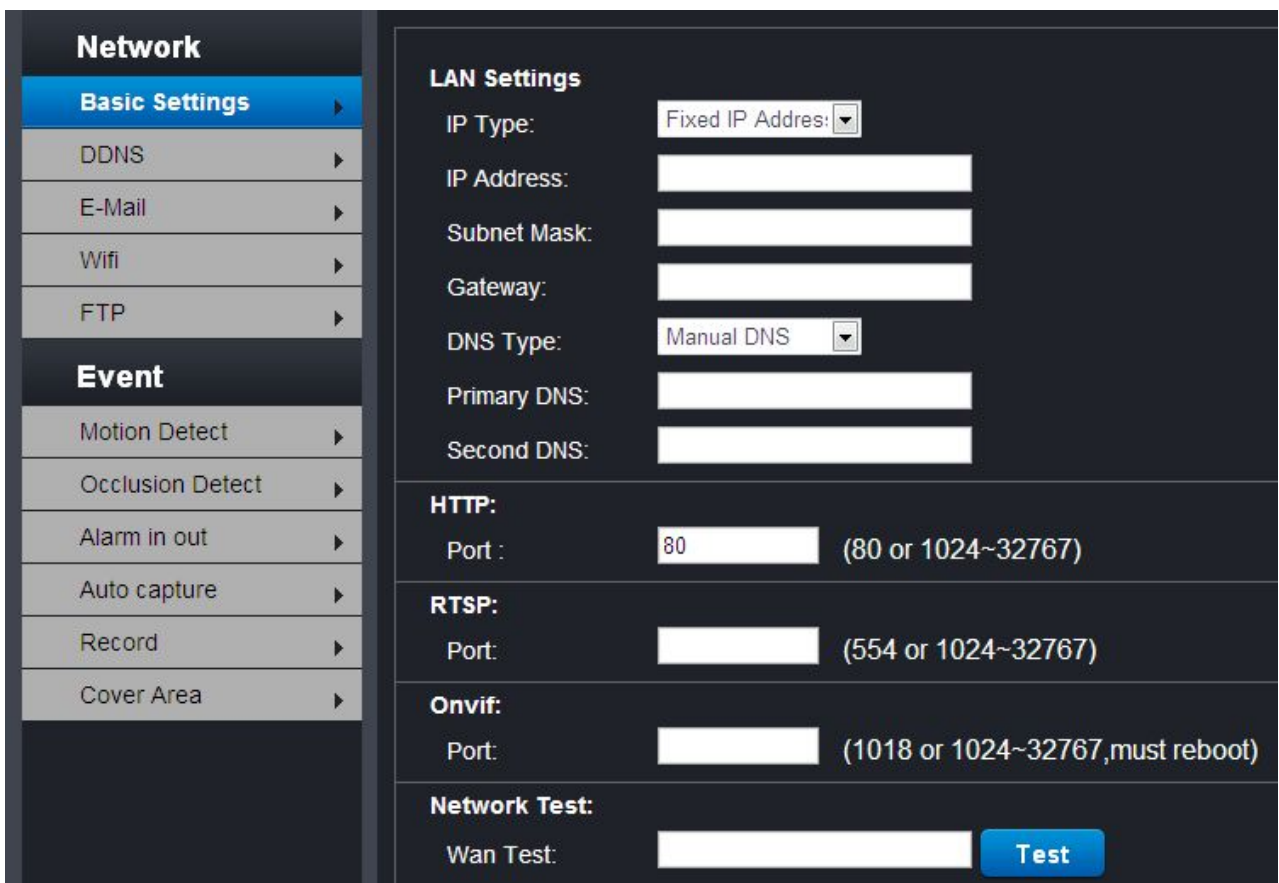
- **PTZ** - mainly for set PTZ information to realize control



2.2.3 PARAMETERS (not every camera with same interface and options)

NETWORK

- Basic settings - set network parameters



LAN Settings -- set the IPC network parameters, DHCP, HTTP protocol

HTTP -- port number is 80

Support 1 channel 10/100M Ethernet, RJ45 interface and TCP / IP, HTTP, PPPoE, DHCP, SSL, DDNS, UPNP, NTP, RTSP, ONVIF protocol

- **DDNS** - set your DNS information here,

Dynamic DNS:

Status: On Off

Provider: 3322.org

Username: username

Password:

Your Domain: youdomain.f3322.org

- E-MAIL -

E-Mail Setting:

Server name: smtp.server.com

Port: 25

SSL:

Authentication: On Off

User Name: username@server.com

Password:

Send To: username@server.com

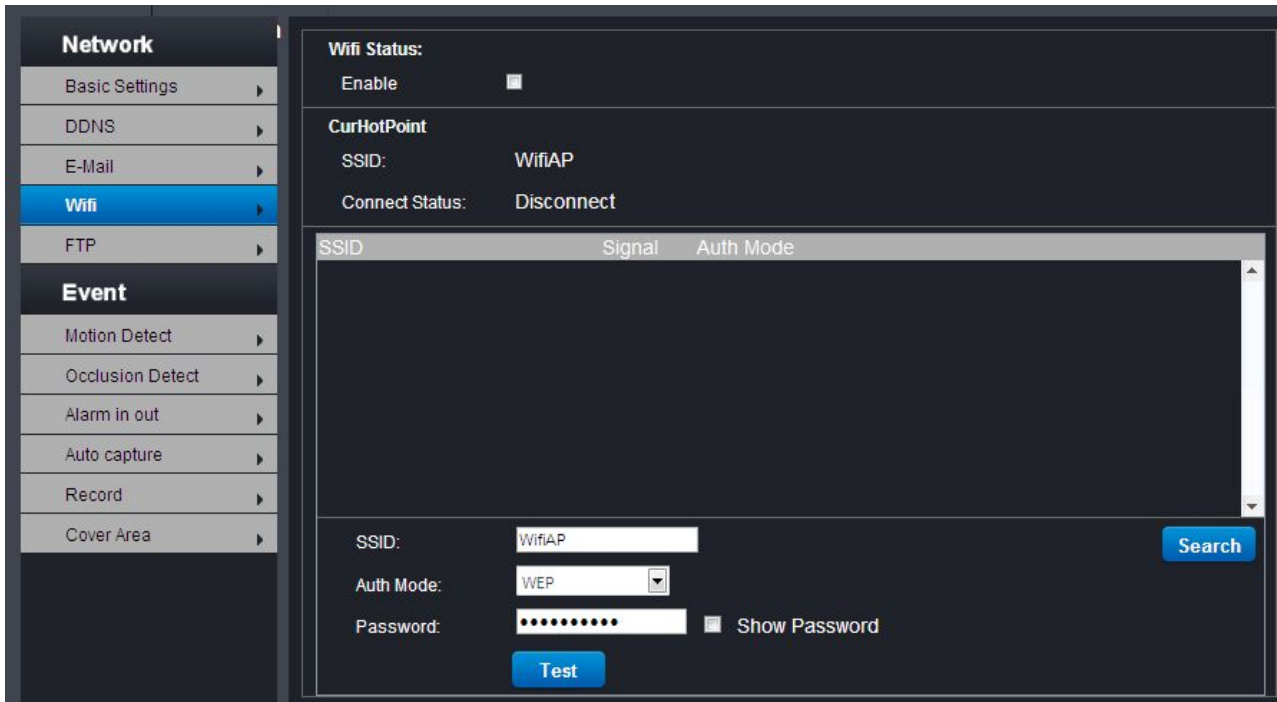
From As: username@server.com

In the Email setting can set SMTP server name, server port and other services.

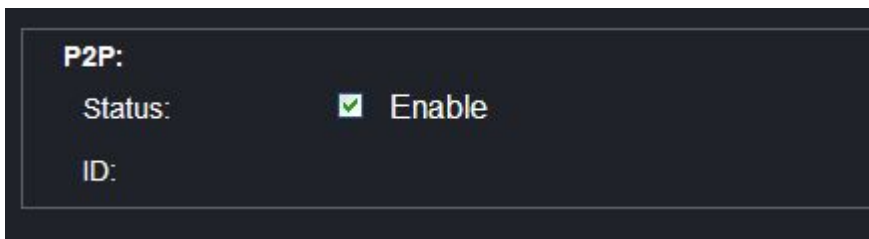
Support Email sending. When there is alarm input, motion detection, video blind, SD card abnormal, etc, alarm trigger will upload the corresponding picture and alarm type information and send them to the specified mailbox, SSL encryption is supported.

- **WIFI** - only wireless camera can use this settings, and before use our wireless camera, you must to enter here to set parameters, must to choose “**ENABLE**” option and save set.

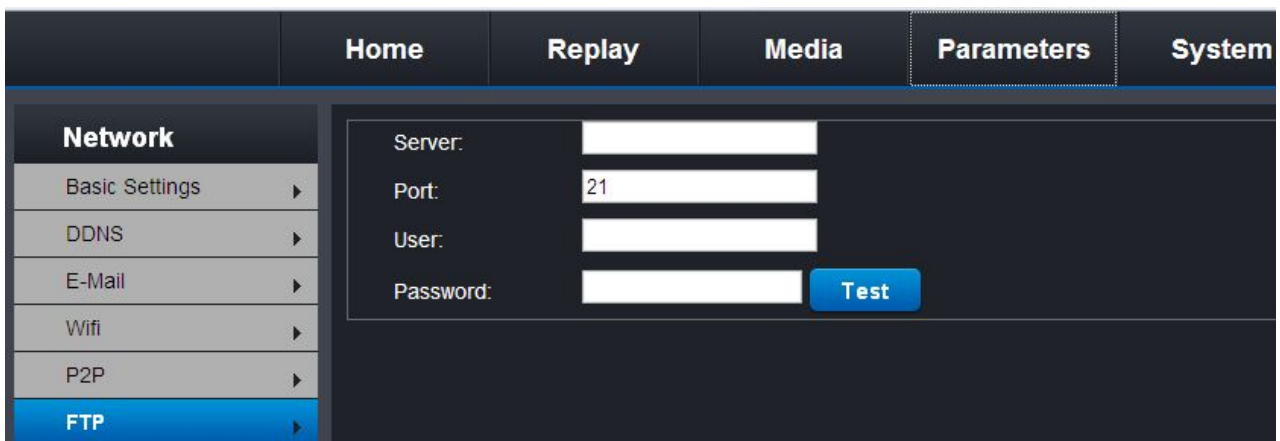
You can search the wireless cameras in your network, and see their WIFI signal strength, connection situation, set user name and password.



- **P2P** - need to choose option of “ENABLE” to make P2P function works.



- **FTP** - for set “file transfer protocol ” between your computer and another server.

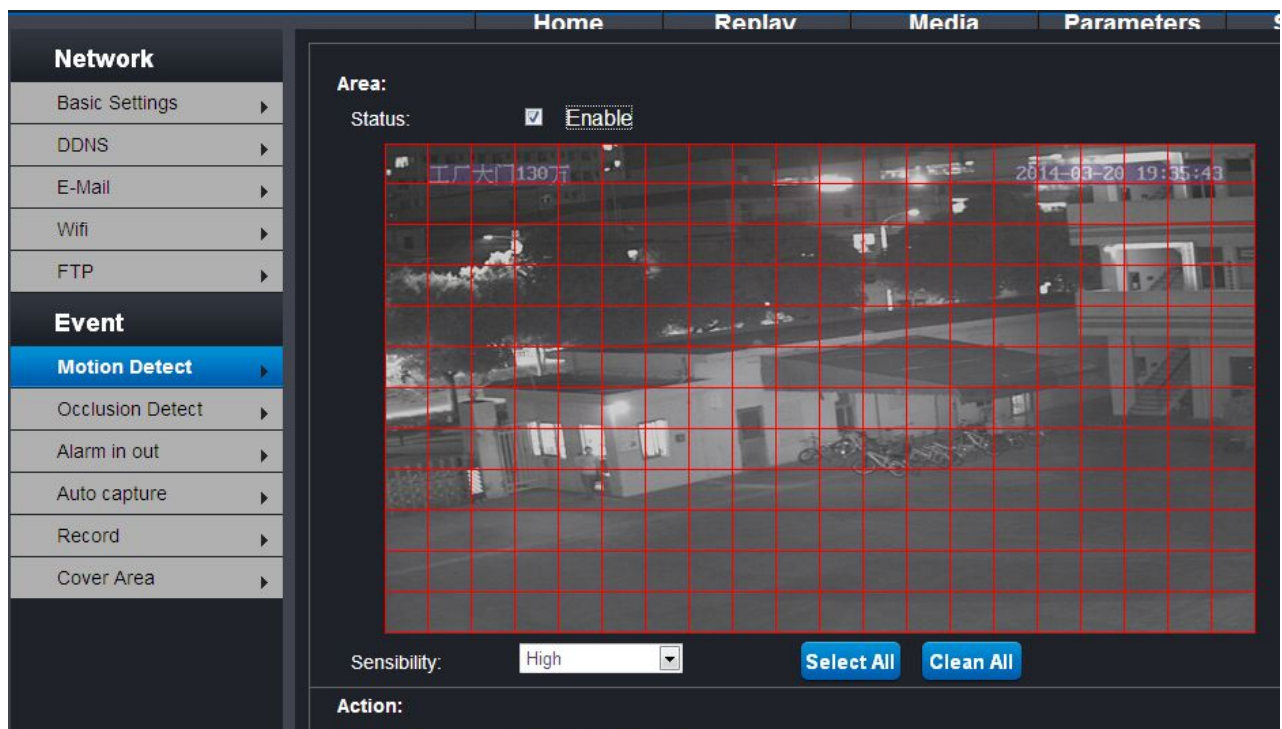


EVENT

- **Motion detect** - you need to choose option of “ENABLE” before use this function.

Choose detection area: click mouse to choose area in the red frames.

Sensibility: 4 levels optional - very high / high / mid / low



You can set the motion detection action:

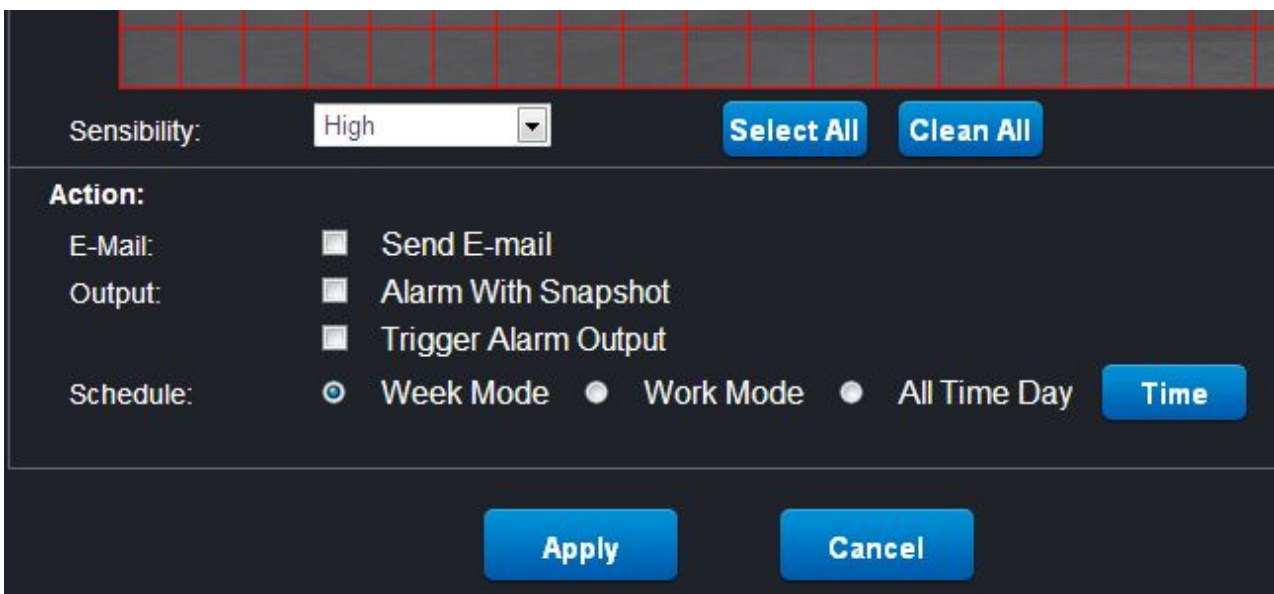
Send Email -- When there is something abnormal in the red area, will send e-mails to the specified mailbox.

Alarm with snapshot -- When there is something abnormal in the red area, will save a snapshot.

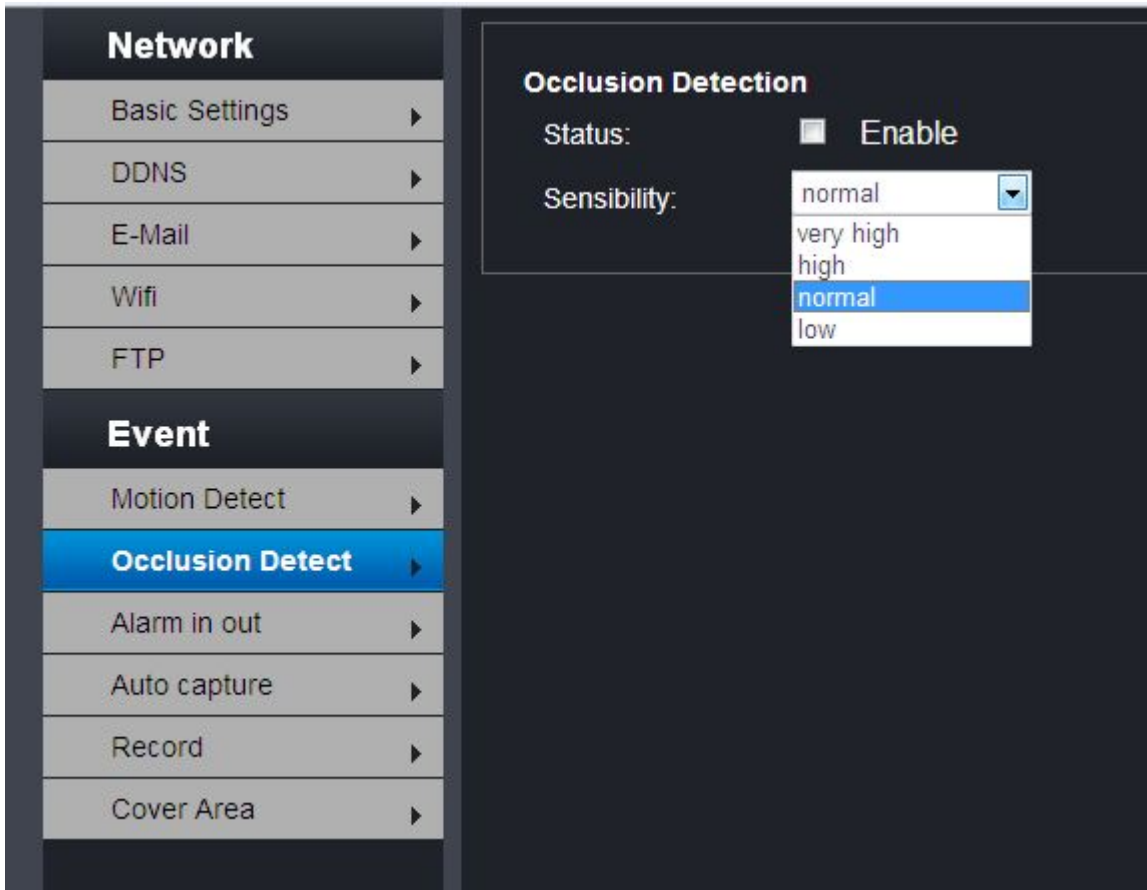
Trigger alarm output -- When there is something abnormal in the red area, will give an alarm signal.

The alarm schedule can be arranged by Week model / work mode / all time day.

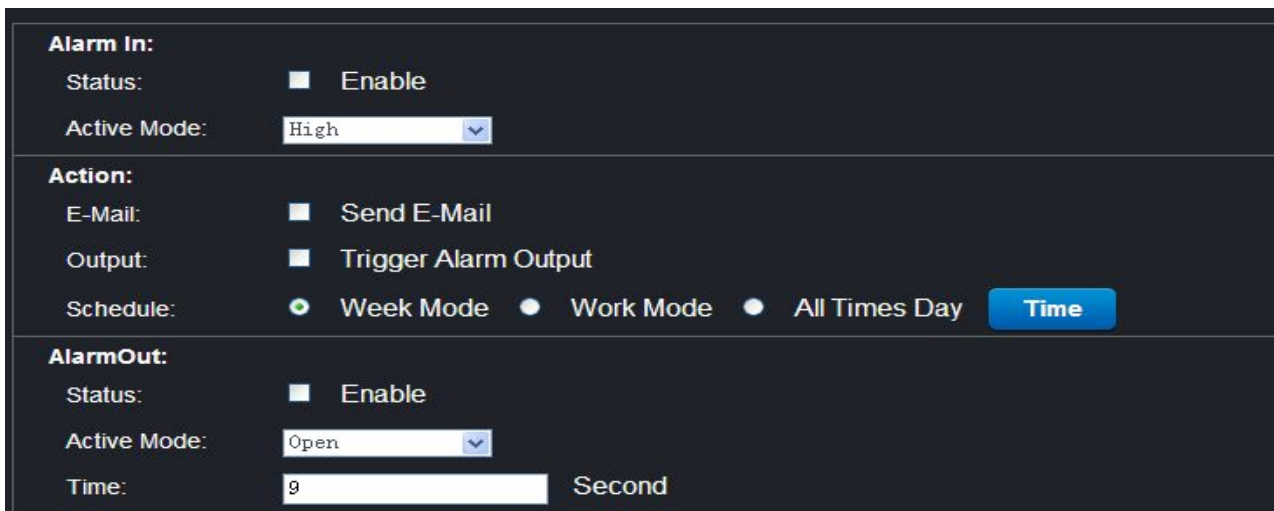
After finish all settings, click "APPLY" to save the settings.



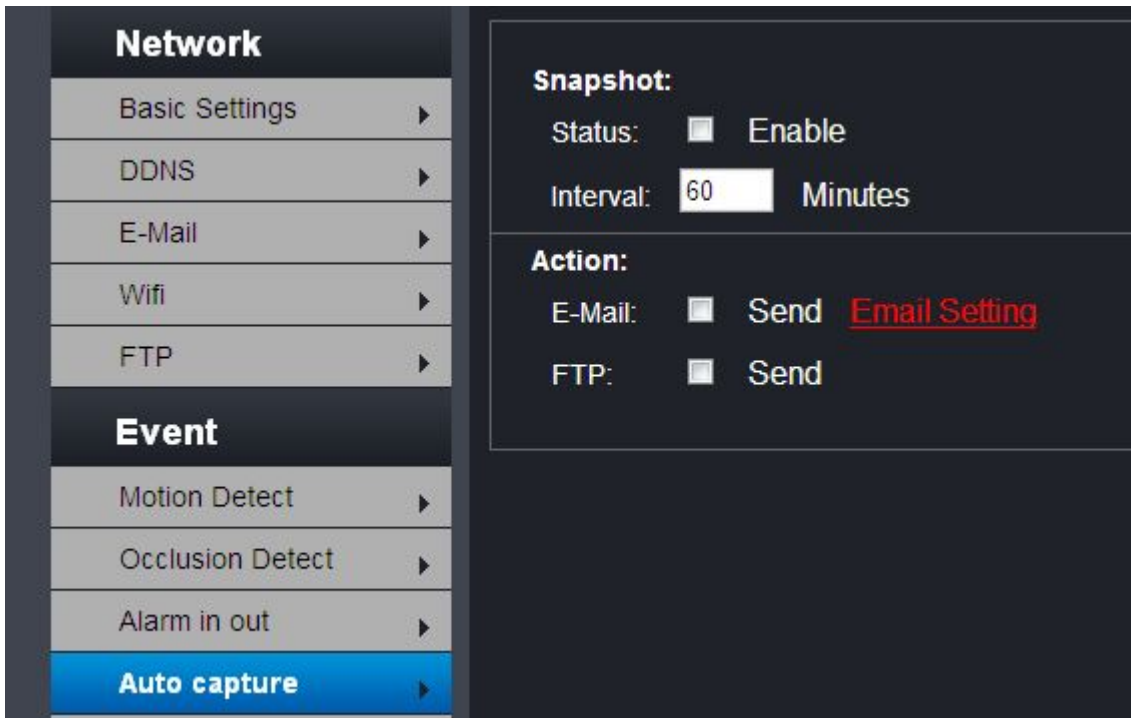
- **Occlusion detection** - only can set its sensibility and choose "ENABLE" option to make it works



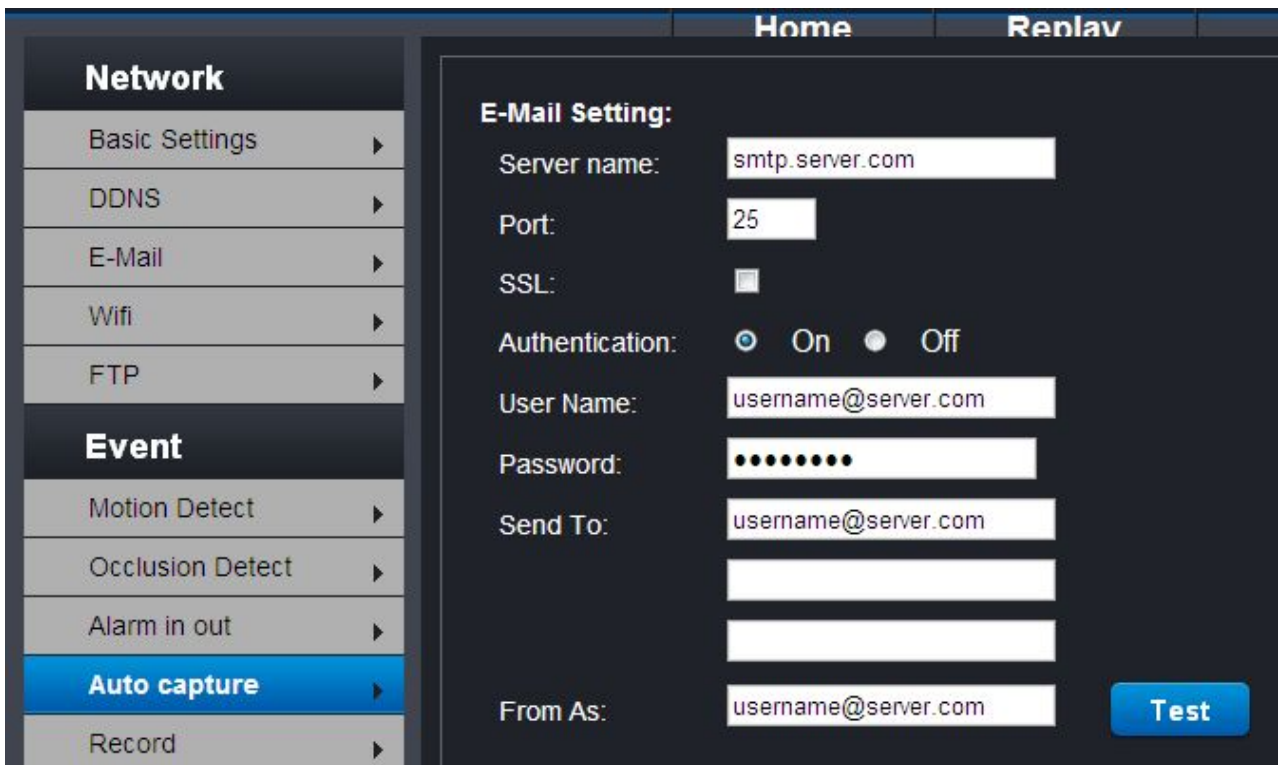
- **Alarm in out** - please choose each options to set according to your application need, then choose “ENABLE” to make the function works, and click “APPLY” to save the settings.



- **Auto capture** - Set the capture time and the save path of capture file and the auto capture can be automatically be saved in the SD card.



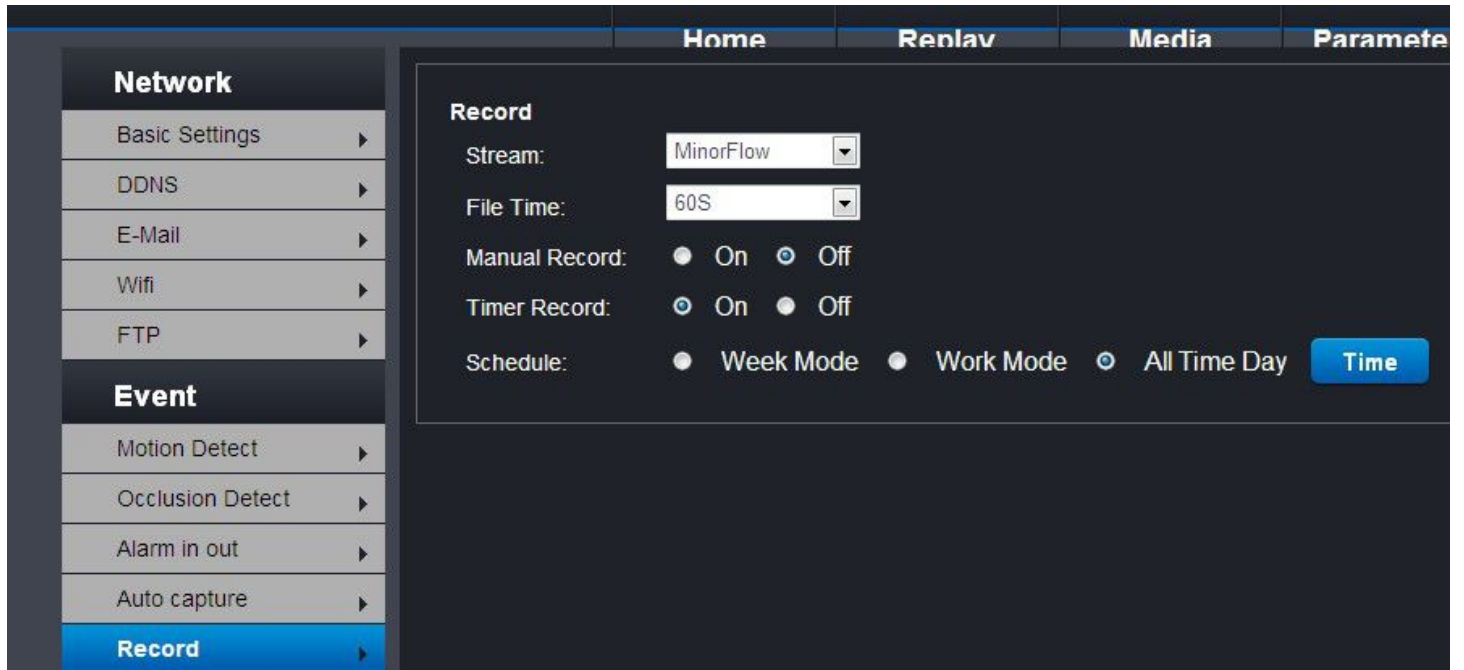
Click the “Email setting” to open below window, and set every options. Then click “APPLY” to save the settings.



- **Record** - set record video parameters, you can choose record stream, main flow need bigger storage capacity.

File time - mean how long time to create a video file for storage.

After finish all settings, please click “APPLY” to save the settings.



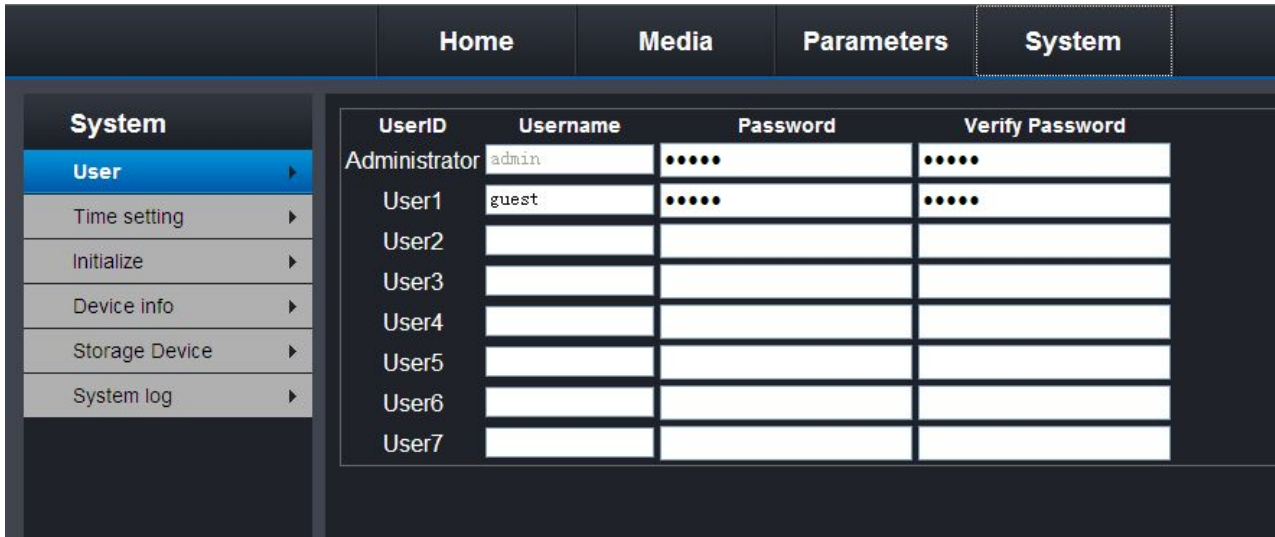
- **Cover area** - set privacy mask area, 4 areas optional, area size adjustable.

Set area: choose "ORIGION 1 - 4", then a mask frame will appear in window, click it via mouse and move it to the area you want to mask, move mouse to each frame right corner on bottom, you will see an arrow of mouse, now can move mouse to change mask frame size.

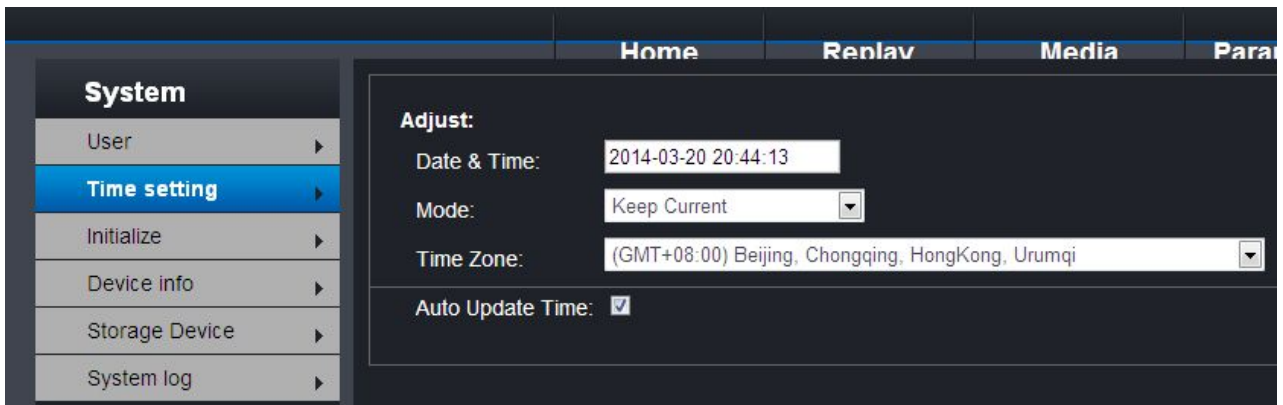


System

- **User** - can set user management permission, add / delete user.



- **Time setting** - set time information of the camera.



- **initialize** - here for user to reset the camera or upgrade the camera.

Reboot: will reboot the camera without power off operation.

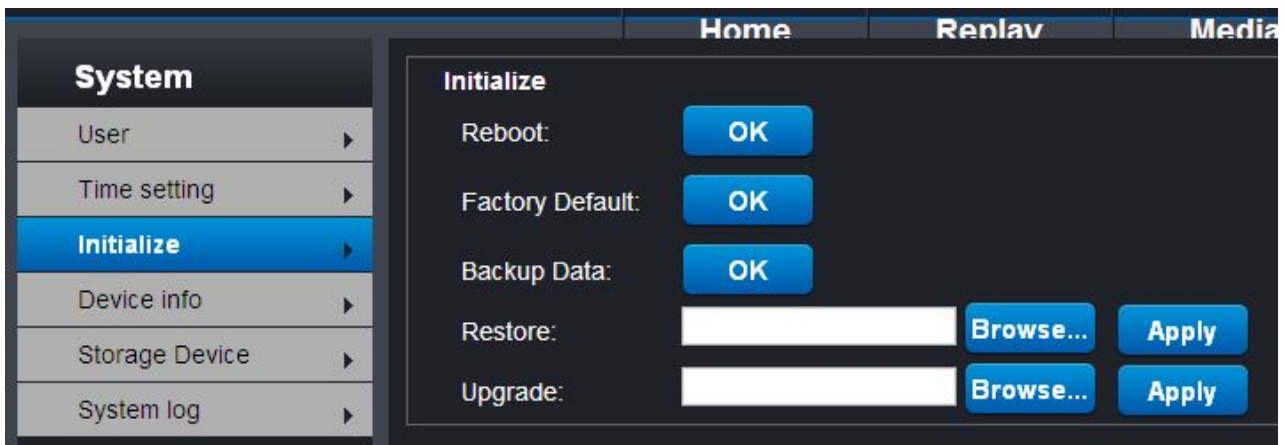
Factory default: click this "OK" button will make camera all settings back to the factory default set.

Backup data

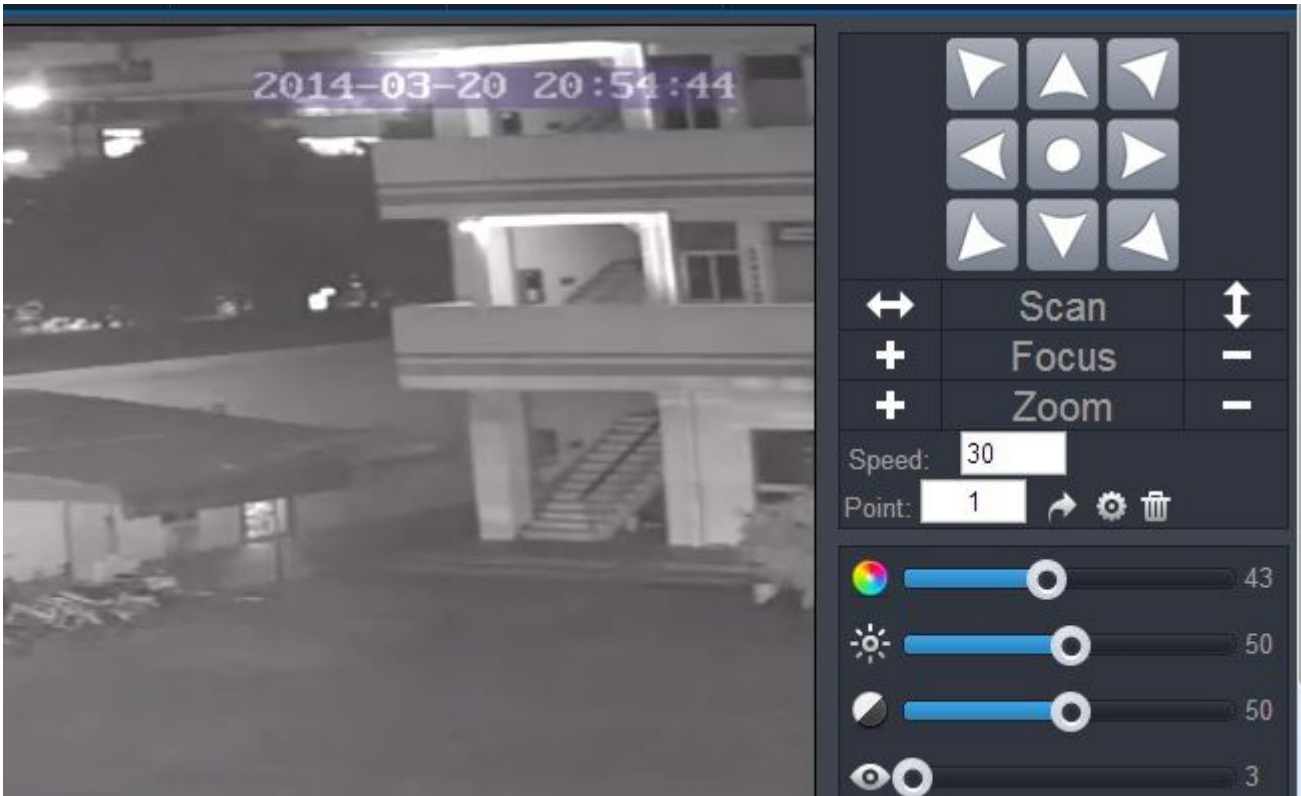
Restore

Upgrade: this for upgrade the camera version.

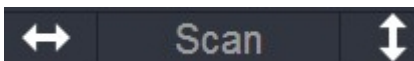
NOTE: power off during the camera upgrading proceed will destroy the camera and can not be repaired remotely.



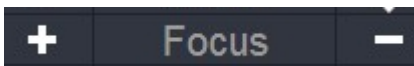
- HOME - page operation



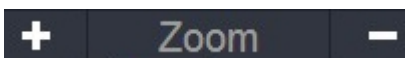
This is for control the PTZ or our rotating bracket, mouse click to move.



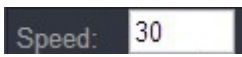
This for control PTZ scan route to be horizontal or vertical.



This for manually adjust focus effect.



This for control zoom lens to zoom in / out.



This for set PTZ moving speed.



This for operate PTZ preset.



go to the preset.

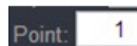


set the present position to be a preset.



delete the present preset position,

all are regarding to the preset number that you enter in





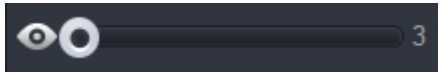
adjust video color.



adjust video brightness.



adjust video contrast.



adjust video saturation.

Belows options are for adjust video display effect parameters.

Flip: On Off

Mirror: On Off

Powerfreq: 50HZ 60HZ

Scene: ▼

IRCut: ▼

Stream: ▼

Image: ▼