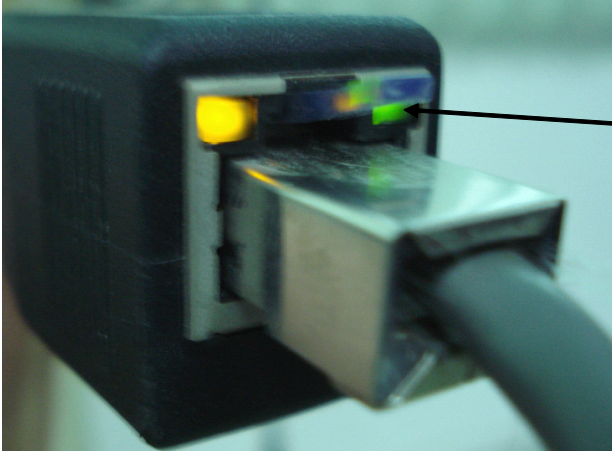


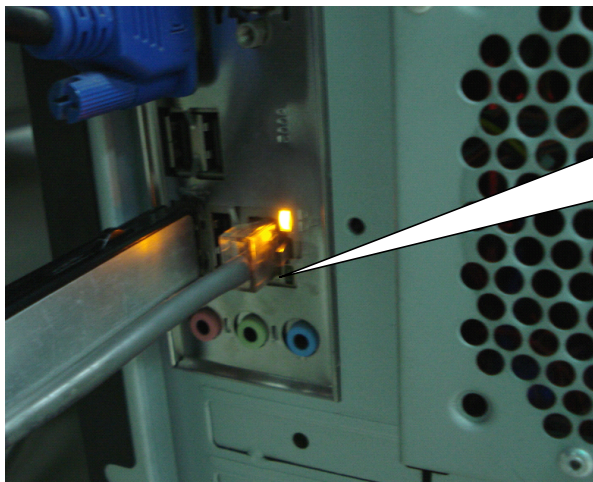
# Analysis for IP PTZ problem 01

Situation: Connect the ptz to computer, but can not find out the IP address.

1. Check the computer's connection lights of the network cable, to see if the light is blink.

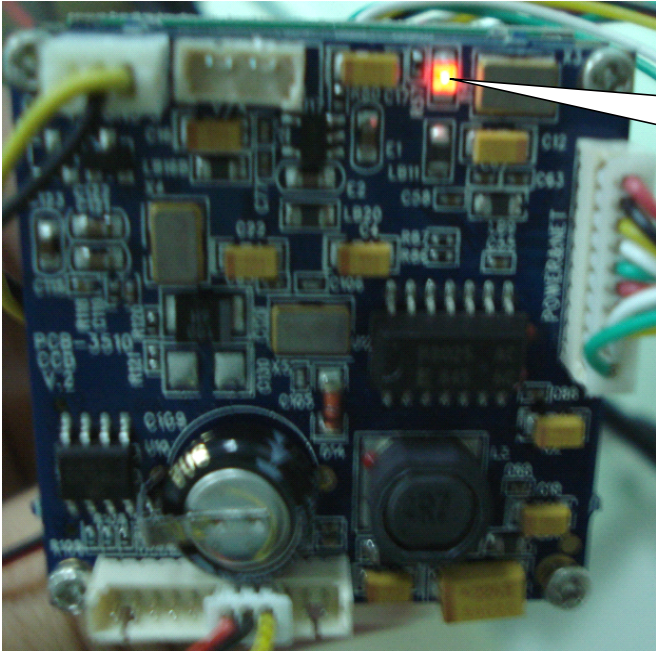


The green light should blink, otherwise, means the connection is abnormal, no signal.

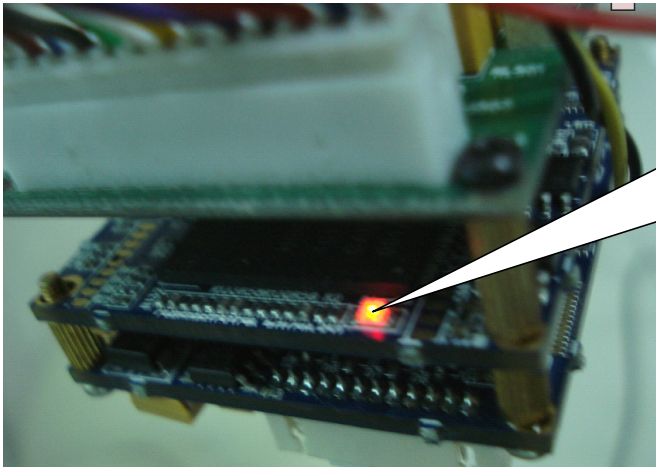


The main instruction light of the computer host will blink, otherwise, means the connection is abnormal, no signal.

2. Check the IP module, to see if the power light is on.

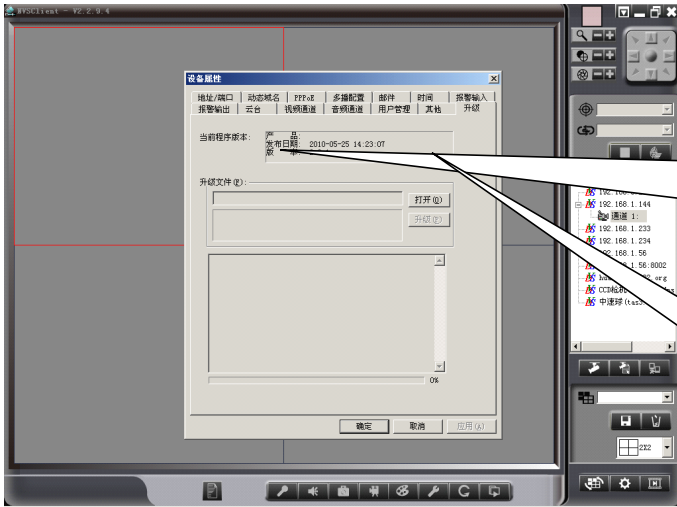


D5 light is on,  
means the IP  
module got  
power, ok.



D1 light is blink  
means the IP module  
is connected to the  
computer, otherwise,  
means the connection  
is abnormal.

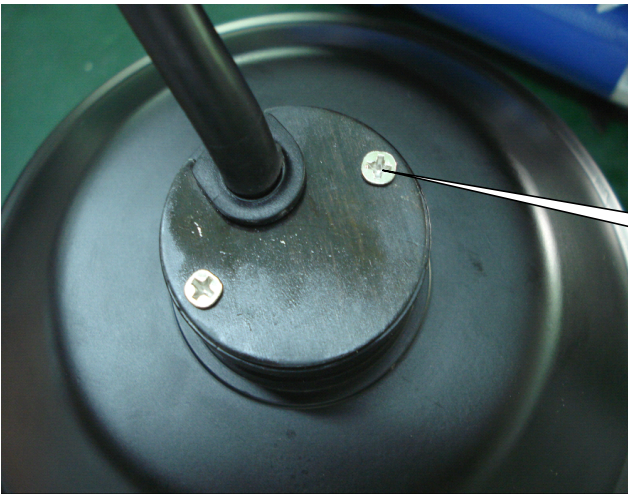
3. Check the software.



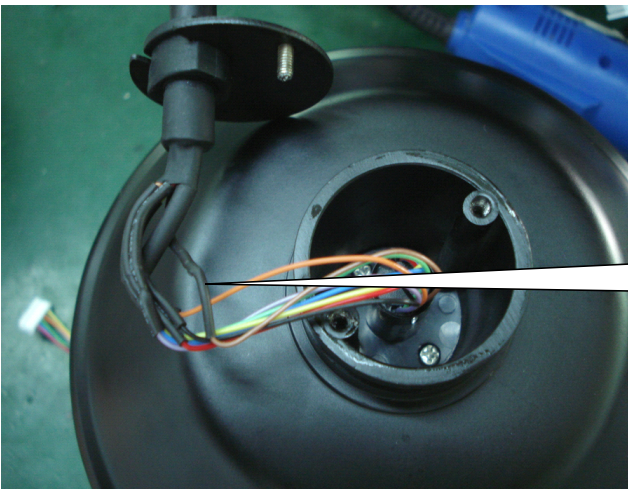
Click the "upgrade" item. If old module, may happens the problem that say you can not find the IP, you need to use the software after 01TH. JAN, 2010.

find upgrade files here, then install it.

4. Check the conducting cable.



Take out 2 screws.



Check if any wires are disconnected.

5. If you find everything above is normal, that means the IP module has problem, need to replace it.