

## Change Decoder, module, cable, power supply of R-500 series mini speed dome

NOTE: Please make sure every steps is as same as my instruction, and every screws need to be saved well, you will need to install them back to their original positions, not all are same size.

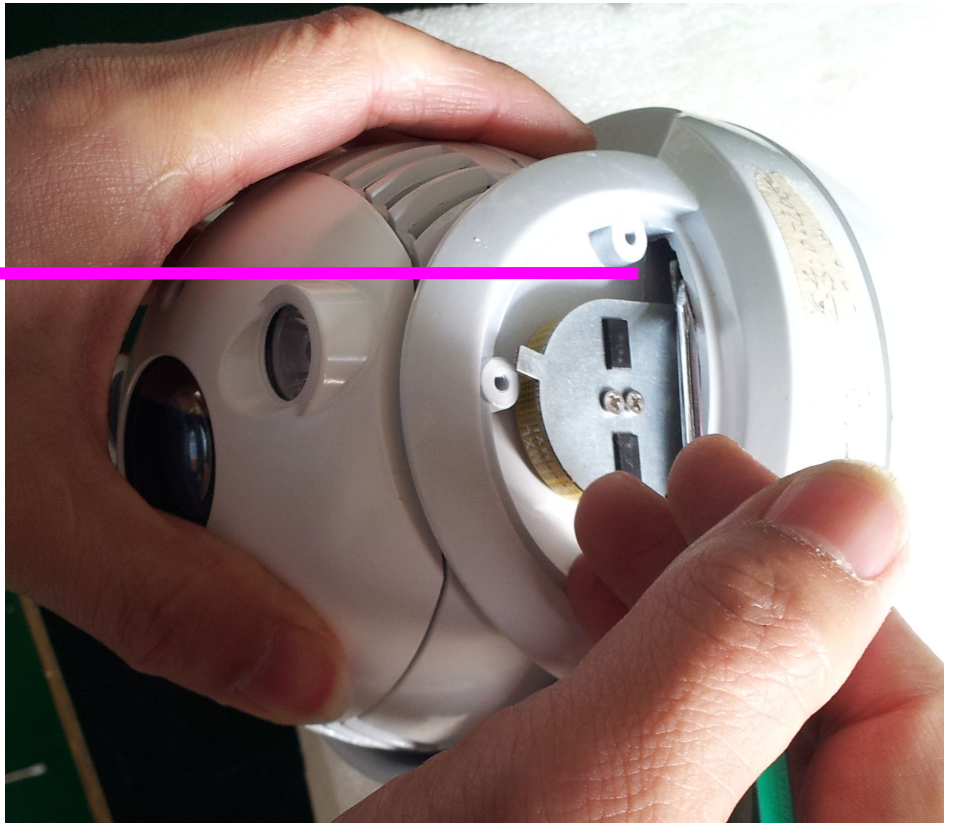
1. Put the camera on a soft and flat desk, you can use its packing foam, and use screw driver to take off the 3 screws on one of its ear, then you can take the small cover off, see the below picture:



2. Then take off 2 screws which is on the back, see the below picture



3. Now please turn the camera to the first position where you take 3 screws off, and you can see the parts like below picture, you need to use a screw driver to move a **hidden part** out, just use the tool to feel it and lightly pull it out,



Then you will see it like this picture:



You must to make this part as same as my picture, otherwise you can not move this part, and you will can not open its housing.



5. Then you can move the metal part, like follow picture:



6. Now please move the camera to see its back, and you need to take 1 screw off, there is 2 screws, you only need to take off the upper one, it is close to the camera top, see the below picture:



Now you can take the camera zoom module cover off, see the picture:



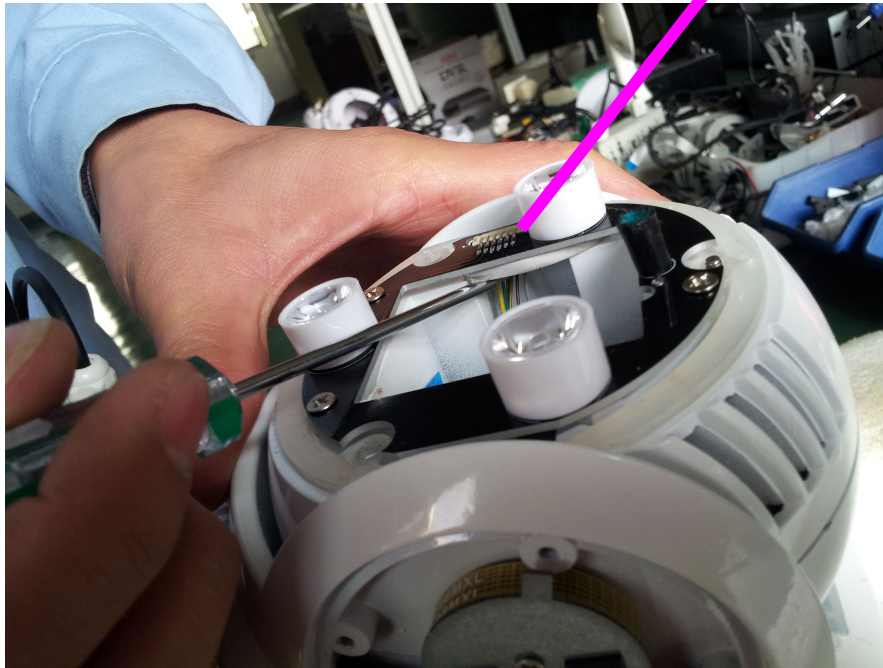


You can see the module is connected to the decoder via a flat cable, it is white, you need to open its lock, then you can take the cable off, please be lightly and carefully,





Now you can check if the connector is loosen, the position is under this part in my picture, if it is loosen, please make it tight, just push it into the socket, :



See the below 2 pictures, Please take the screws off, then you can take the module off, please note the side of module is different, this side you need to take off screws is without the cable connector, and remember its right position, otherwise, when you put it back later, will make big mistake.

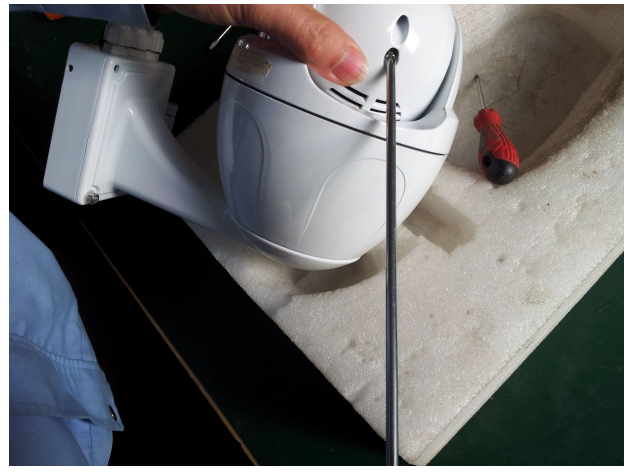


Now the zoom module is taken off, you can change the new zoom module to this camera, then put every parts back to their original position.

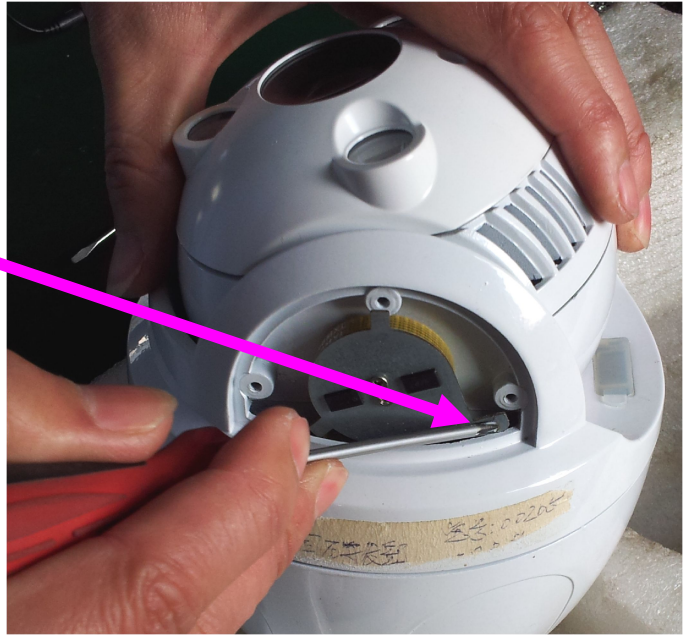
Connect the white flat cable to the new zoom module, then fix it to the right position, put the cover, and make the 2 screws tight, which are on the middle of house back.







Then you need to push a small part into housing, it is at the position of ear which you opened, like below picture, this **hidden part** was pulled out when you did the 3<sup>rd</sup> step, just use the screw drive to push it lightly, then it will be hide again.



After the part be hide, you see the state like right picture:





Now you can make the rest 2 screws to be tight, which are on left and right of the housing back. Finish replace zoom module of camera.

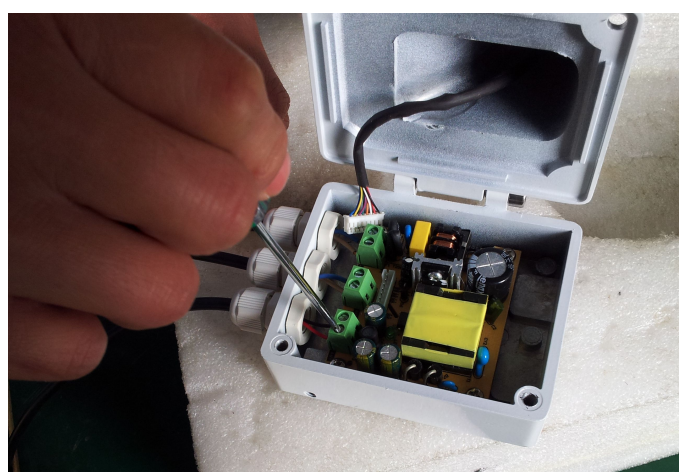
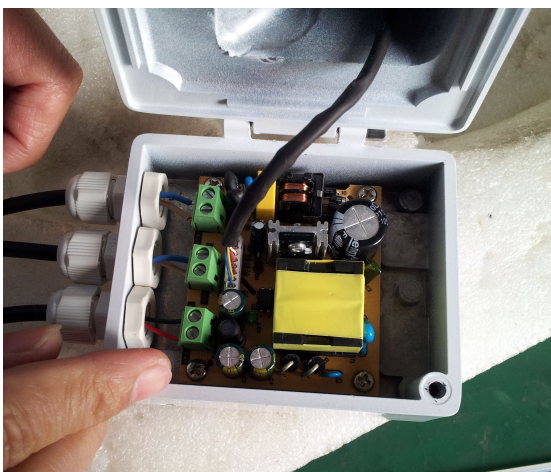


**We can open the bracket to replace power supply plate, steps as follows:**

1. Take the bracket's 4 screws off, you need to use hexagon screwdriver.



2. Then you can open the cover, and see inside power supply plate , the 3 green connectors are connected to wires, you can use screwdriver to make them loosen, then the wires can be pulled out, as follows:

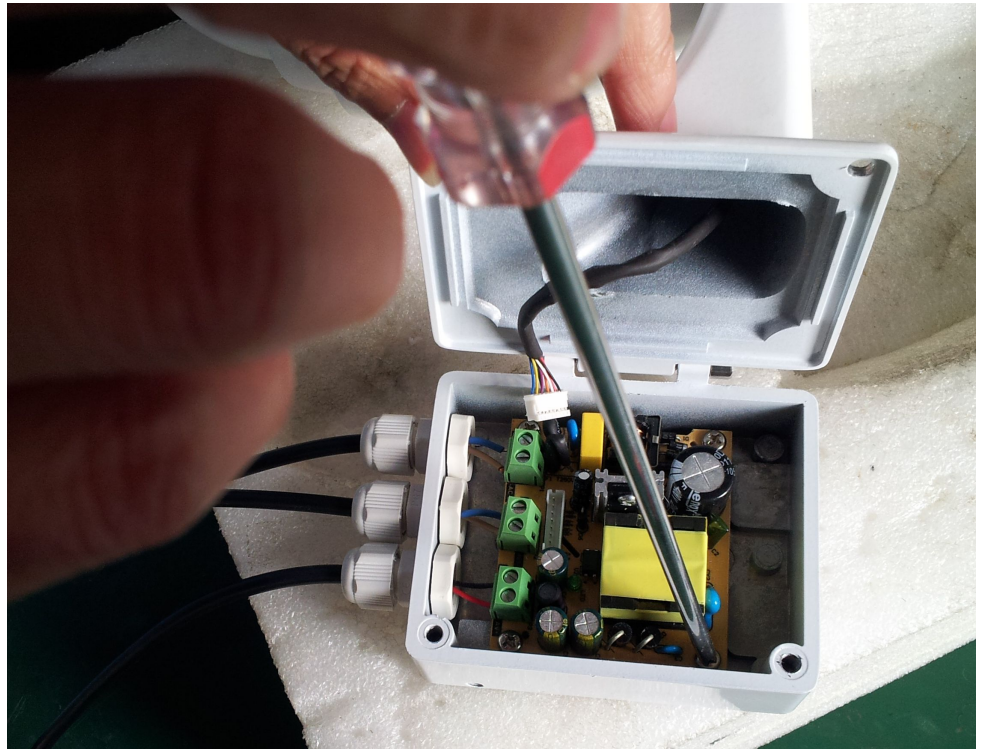




3. For replace the whole power supply plate, you need to take 4 screws off, then the plate can be taken out, the 4 screws on 4 corners of the plate.

4. After take these screws off, you can put the new power supply plate into the bracket, then fix screws to make it tight.

5. Finish replace power supply.



## Replace the decoder (main PCB board) for this camera:

1. Take 3 screws off which on top of the PTZ housing, then you can take the bracket off:



2. You can see there are **3 screws** on the housing under the bracket top, take them off, and use hand to take the PTZ housing off, see below 2 pictures:





3. When you take off the first housing, inside is another housing, like below picture, this let the housing to be waterproof totally, but on the second housing, **you see there are some screws:**

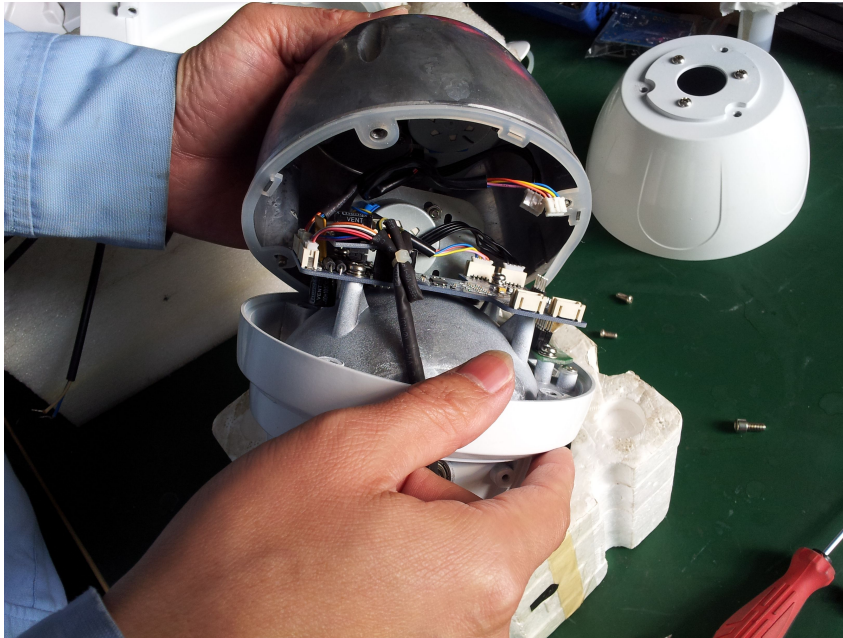


4. Take these screws off, then you can take this second housing off, and you can see inside with decoder:

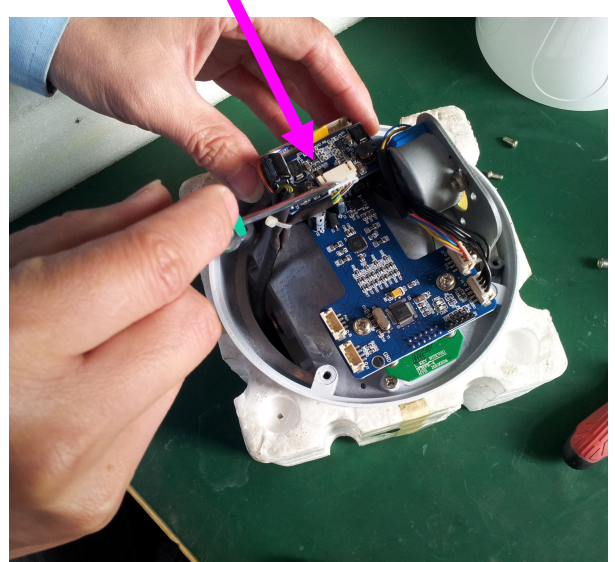
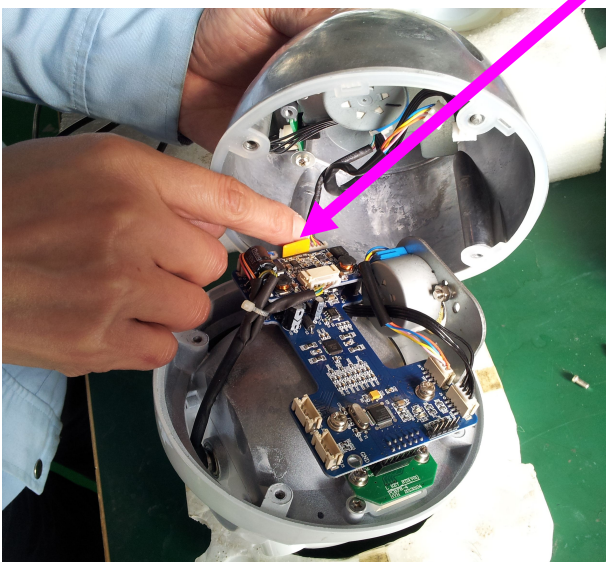




5. After open the housing, you can see the decoder is inside,

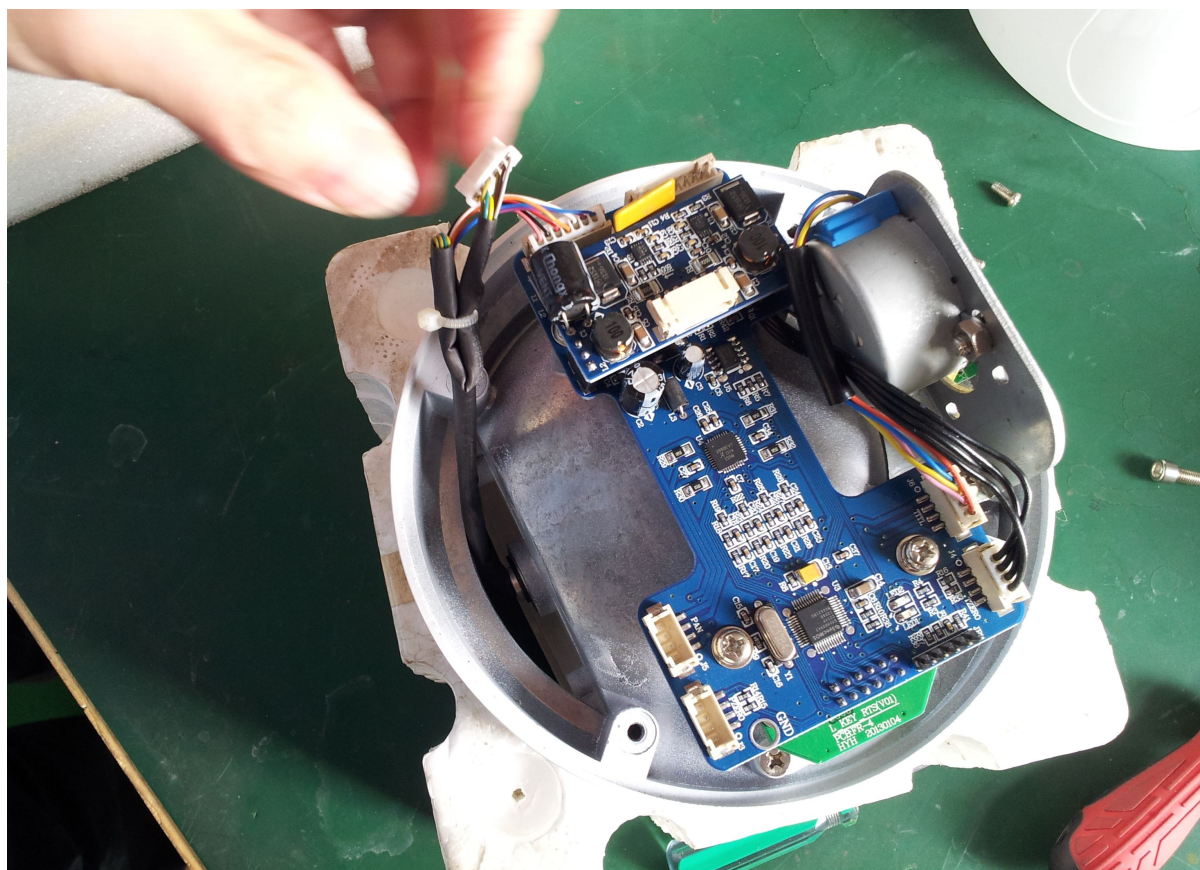
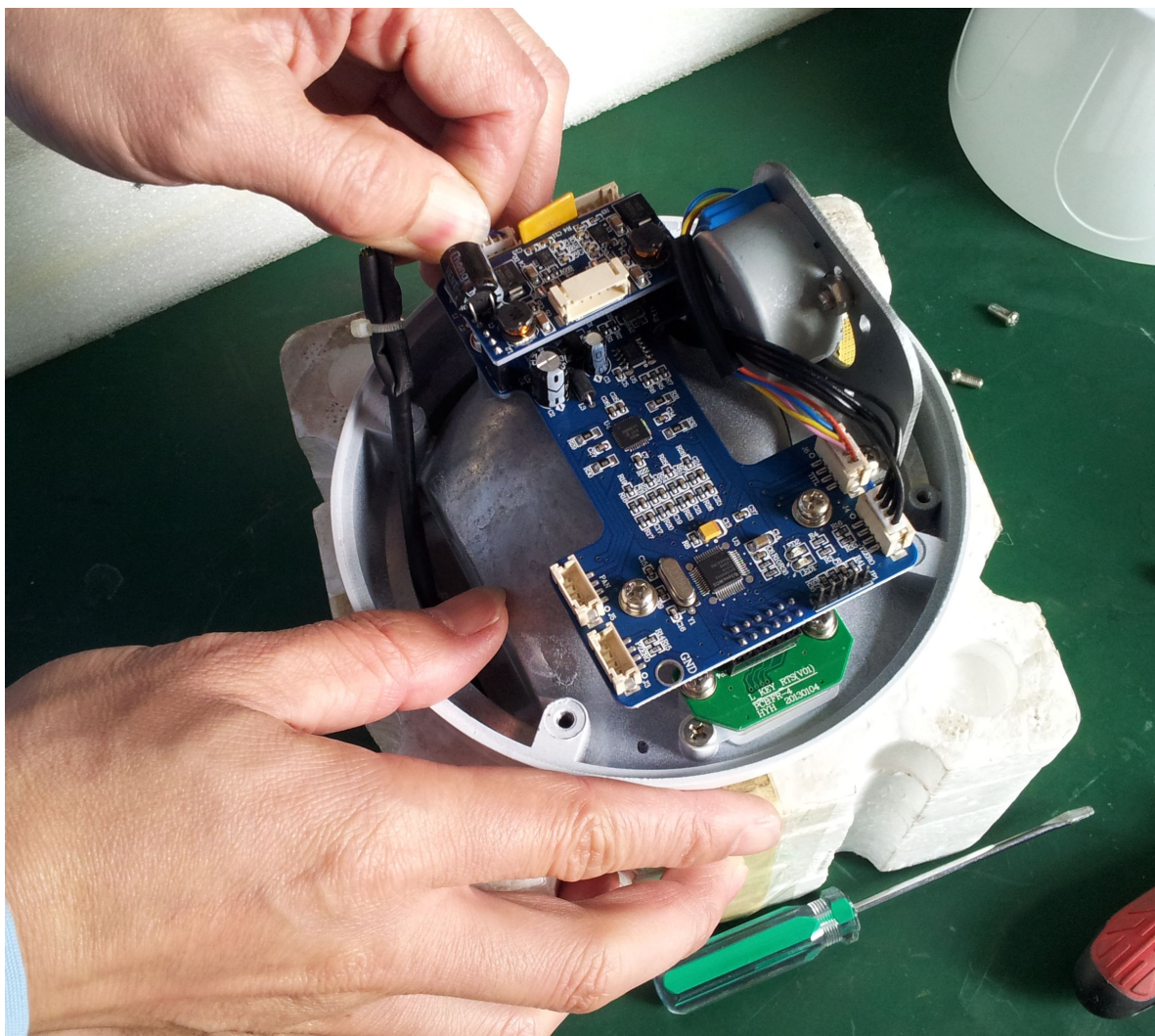


6. You need to pull 3 connectors out, the one behind Yellow IC and whit one on the picture on right:

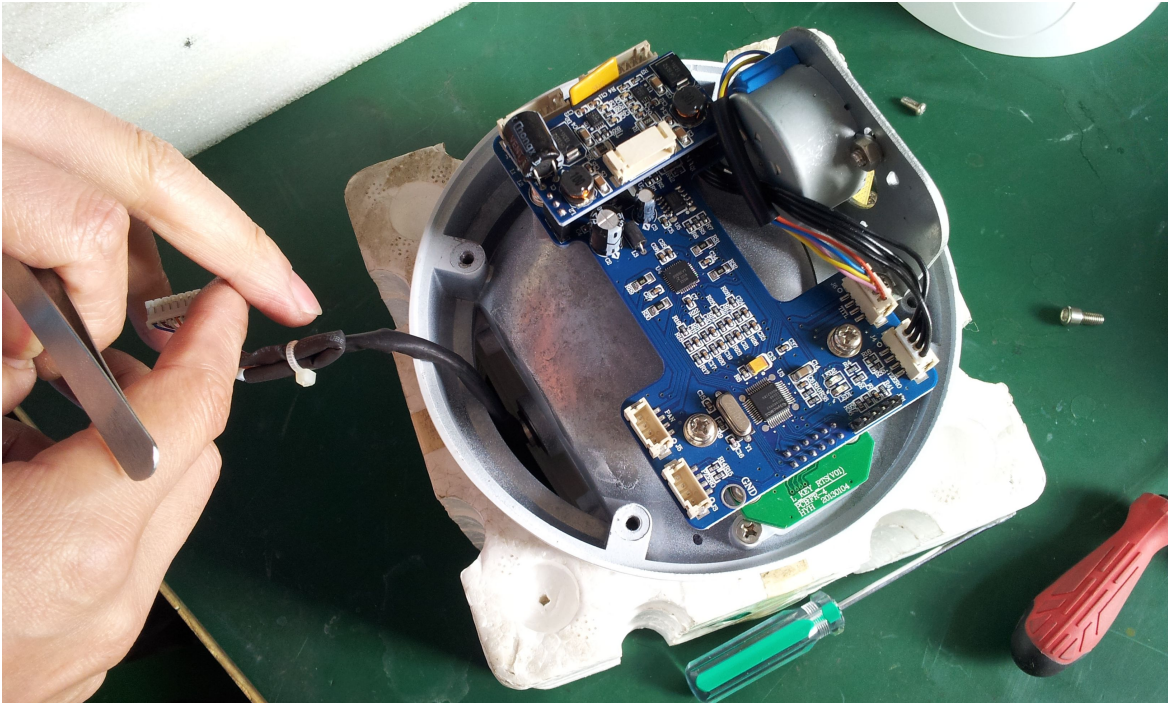




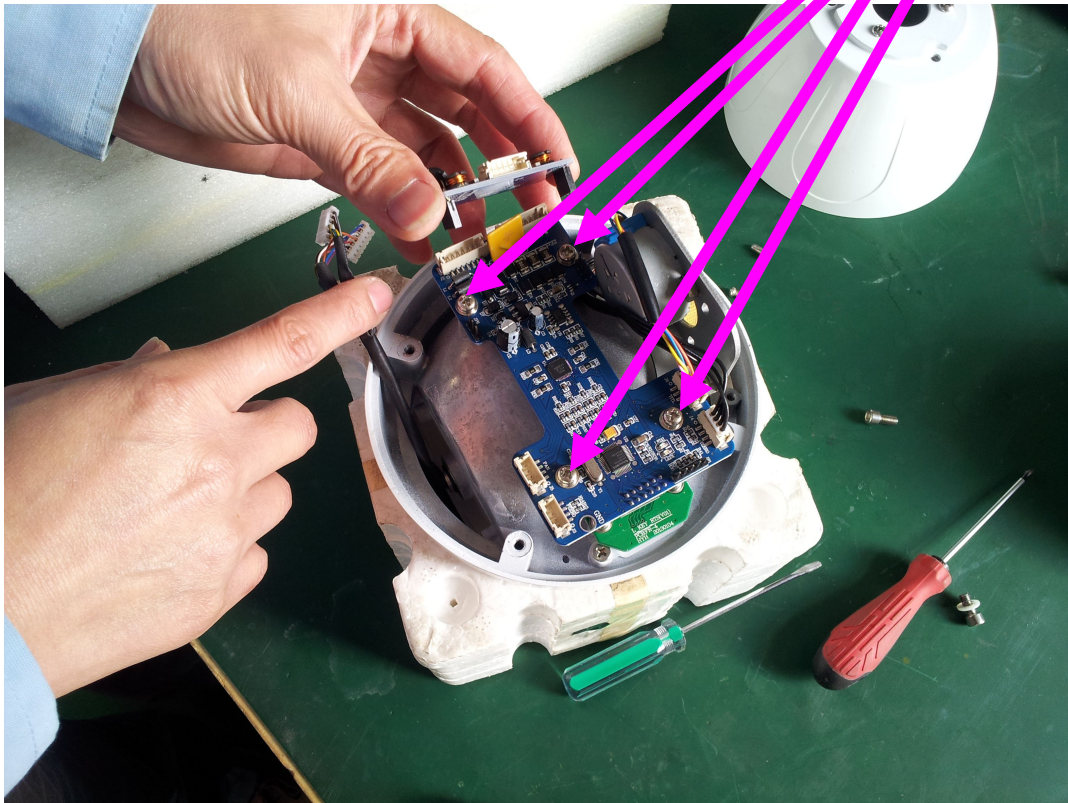
7. Pull these 3 connectors out, the cables disconnected,







**8. Now you can take the small plate off, as same as below picture, then there are some screws, please take them off, then you can change the decoder (big main PCB plate)**

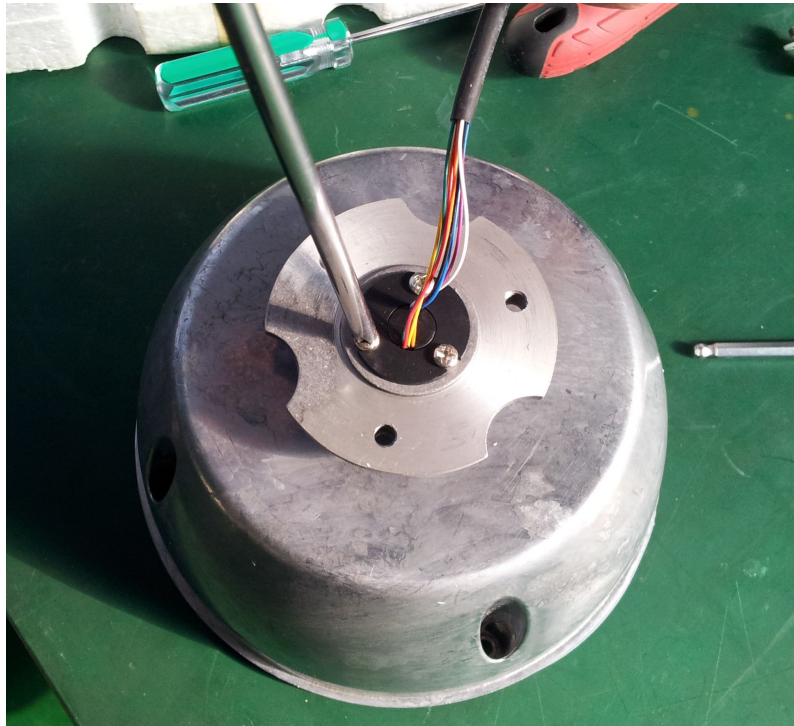


**9. After replace new decoder, please fix all screws to their original positions, and then connect the wires to their original connectors.**

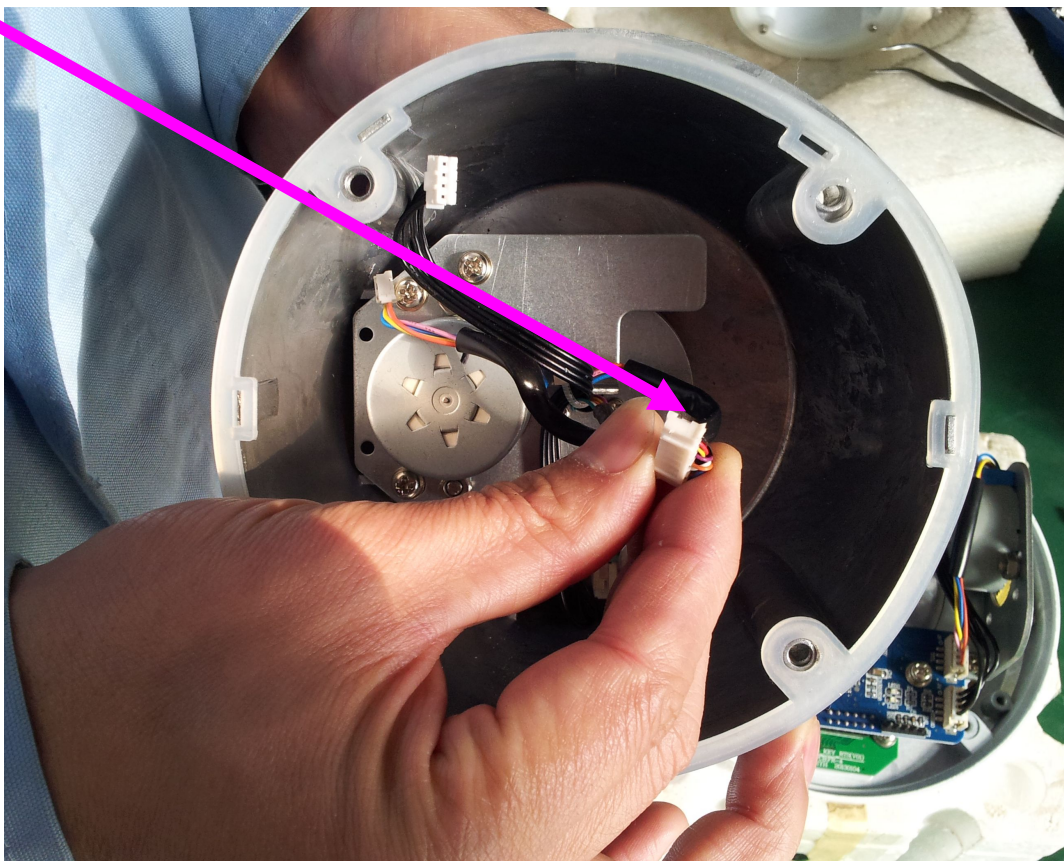


## Change conducting cable

1. After open the housing, you can take the housing to check its conducting cable, and on the top of the second housing, you will see 3 screws, take them off, like below picture:



2. Then the conducting cable can be pulled out, just be careful, the cable's connector is small, the white part, you need to make it to be close to the wires, the state as same as my picture showing, then you can pull it through the small hole of housing, and then change a new cable, otherwise you will can not take it out of that small hole.





**After you finish all works, please be carefully to fix all screws back to their original positions, and don't mix all screws together, for each part, put their screws separately, otherwise, some parts use different size of screws, and different style, when you found this lately, will waste your much time to do everything again.**

**Wendy**

**RATINGSECU**

**13. 01. 2014**





