

Replace decoder of our high speed dome camera (main PCB board)

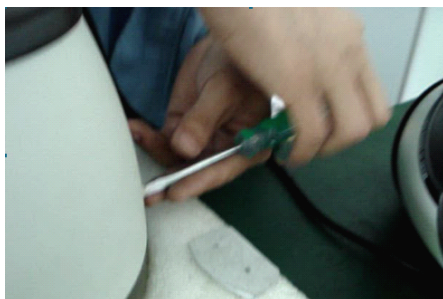
1. Put the PTZ on table stably, you can use the bulb in our packing carton to be the basis for PTZ, please refer to my picture



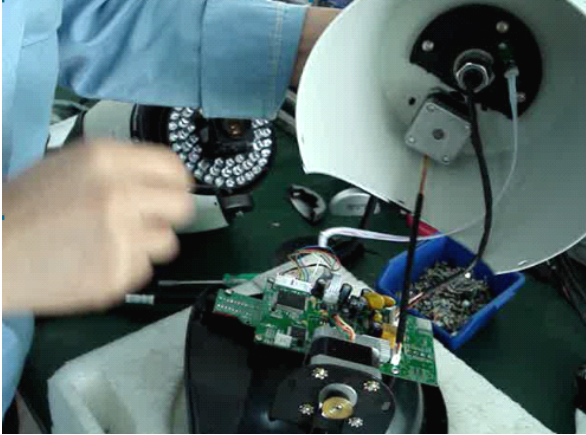
2. We need to take the bracket off, please take the screws off, refer to my picture, after you take off all screws on the bracket, you can easily take the bracket off.



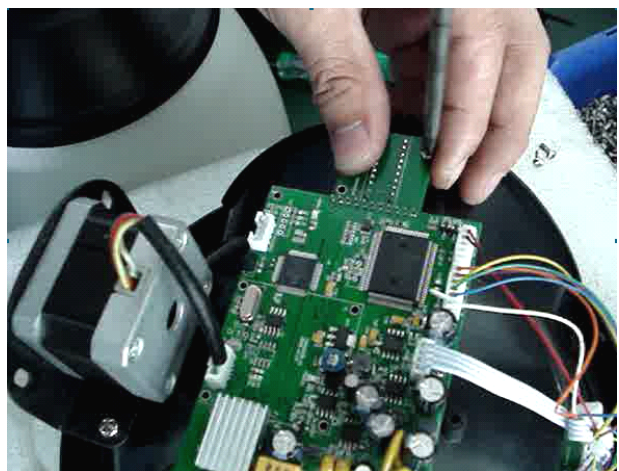
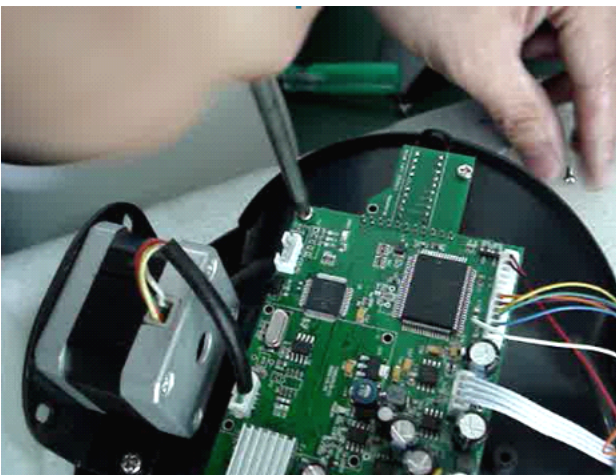
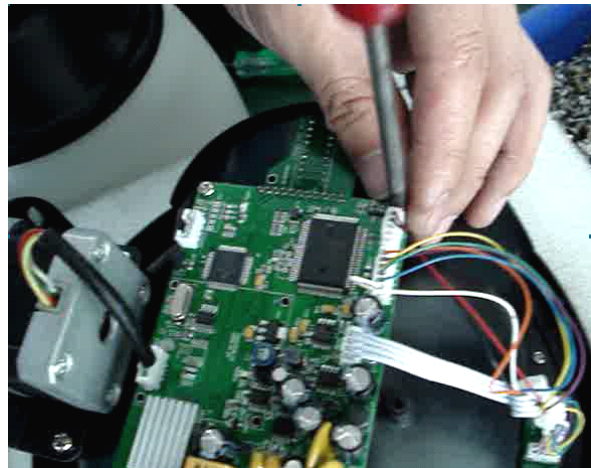
3. Now we need to open the PTZ's housing, we need to take all screws (generally 4 pcs) off from the housing, refer to my pictures.



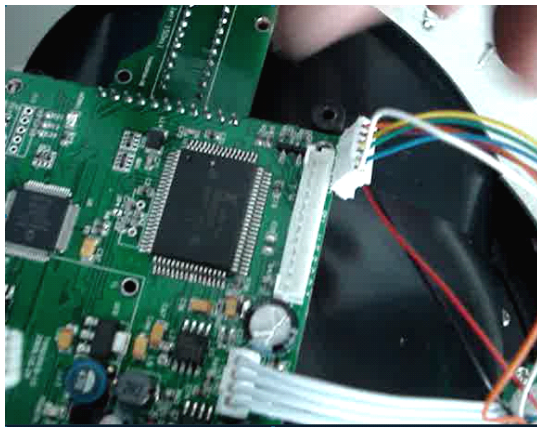
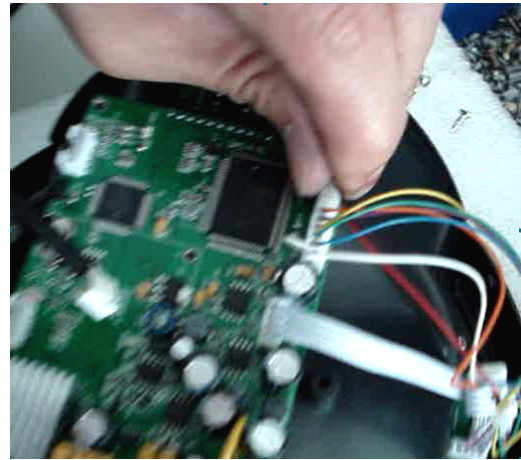
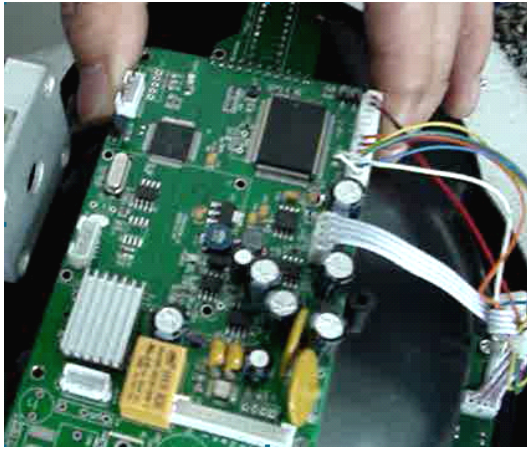
4. After you take off the PTZ's housing, you will see the decoder (main PCB board) on the top of ptz, but it is still connected to the housing via some wires, decoder is fixed by about 5 pcs screws.



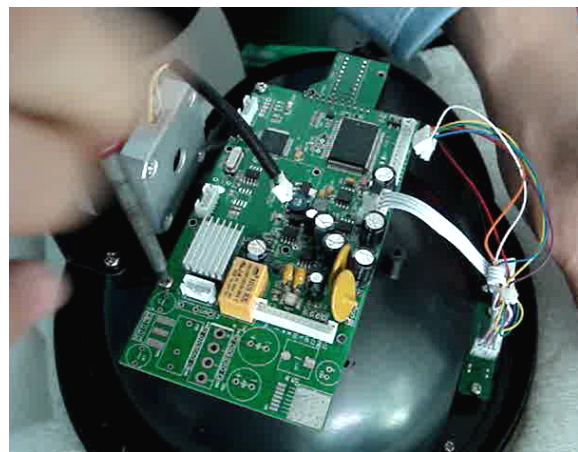
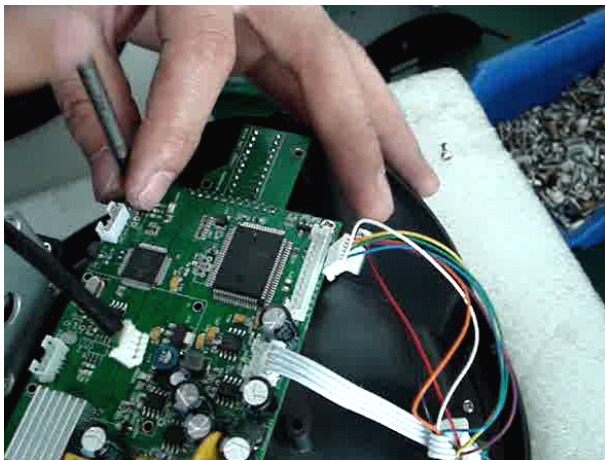
5. Now we need to take the screws off, then we can move the decoder.



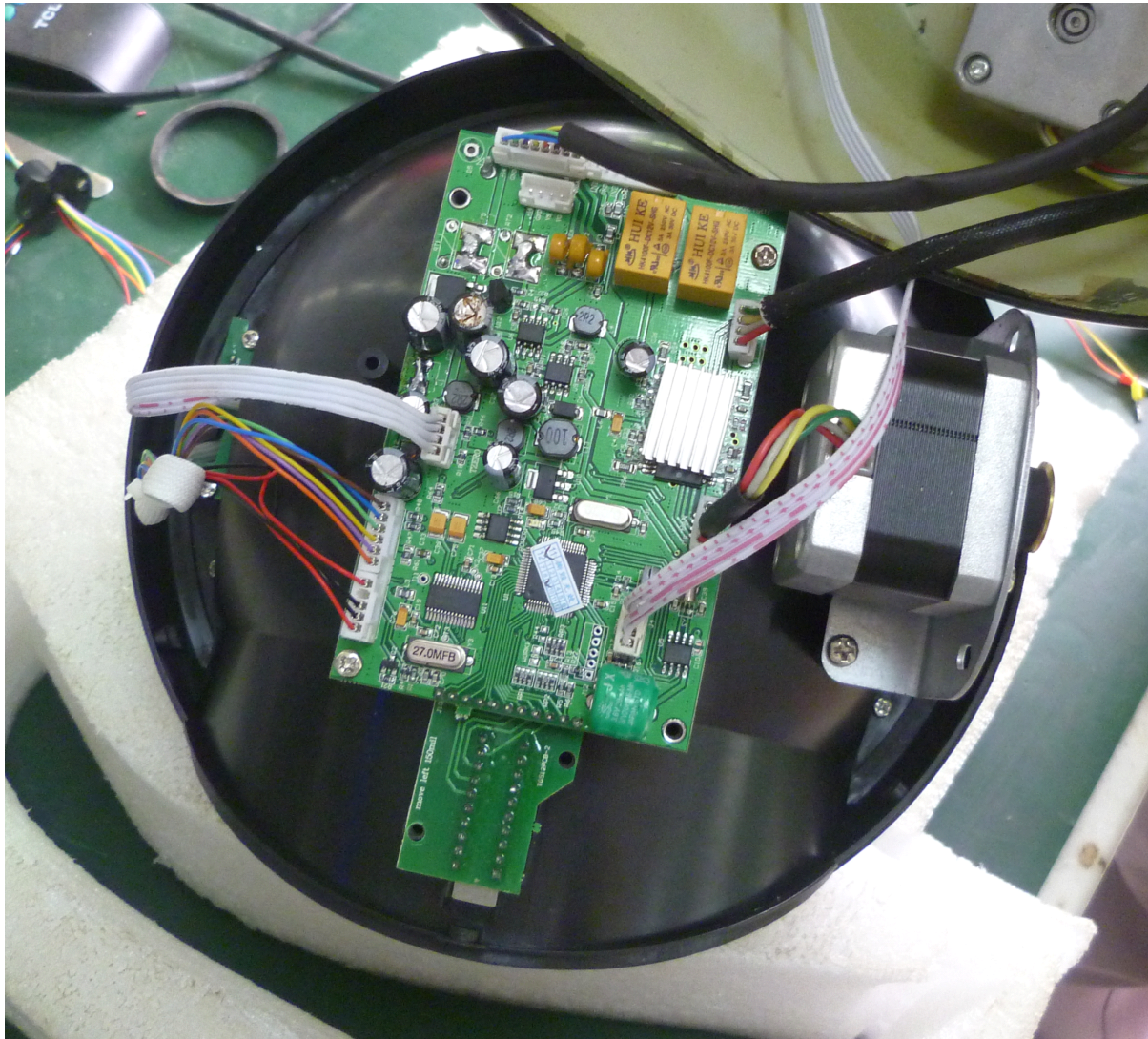
6. Now we can move the decoder and take it away from the PTZ head, but we also need to pull all connection wires out, then we can take off the whole decoder, and we can put a new decoder to this position later.



7. Now we can replace a new decoder to the PTZ, put the new decoder on the position of old decoder, and make it looks as same as before. Then use the screws to fix it on the PTZ's top. Please refer to my pictures, but not means you only need to fix 2 screws, you should fix all screws that you took off from the old decoder.



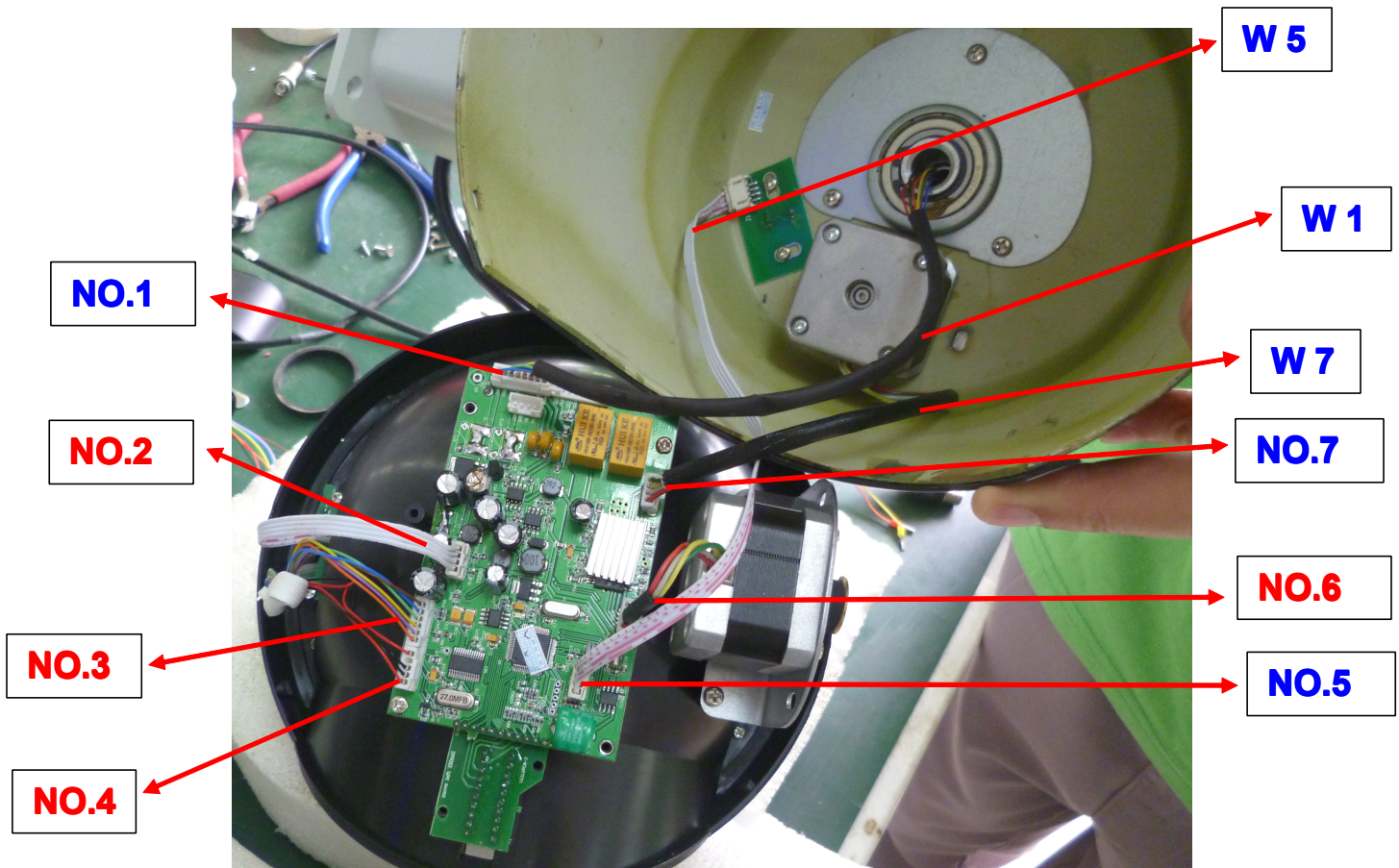
8. When you finish fix the new decoder, please remember to plug all wires into their correct positions, as same as the old decoder. Please notes the wires color, and don't make them in reverse positions.



9. After you fix the new decoder, please cover the original PTZ housing, then put all screws of the housing and bracket to their original positions, make the housing and bracket to be stable, then you can test the camera again.

Wiring of the decoder:

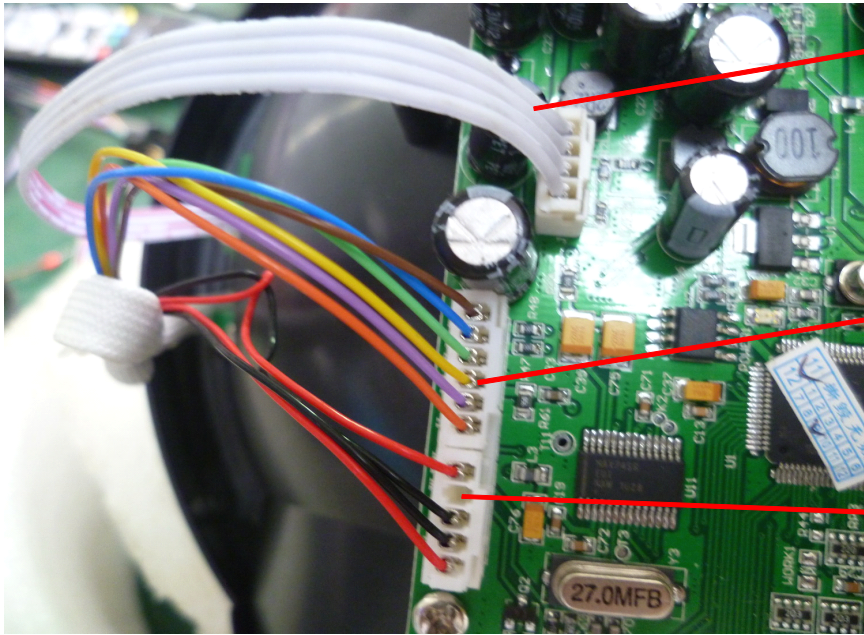
1. Please see the follow picture, when you open the PTZ housing, you will see there are 7 correct positions need you to wire, we need to know the 2 ends of some wires, please note the blue words.



2. Now we can see every positions of all wires, please note the color and direction.

Note, you don't need to pull all small wires out, you can see we put them in row to 1 socket (we call it 2 pin, 4 pin, 6 pin, 8pin etc, pin means 1 wire, 4 pin means 4 wires with different color in the same 1 white socket), so, you only need to pull the white socket out, and when you finish works, just plug the same white socket to its original position, everything is ok.

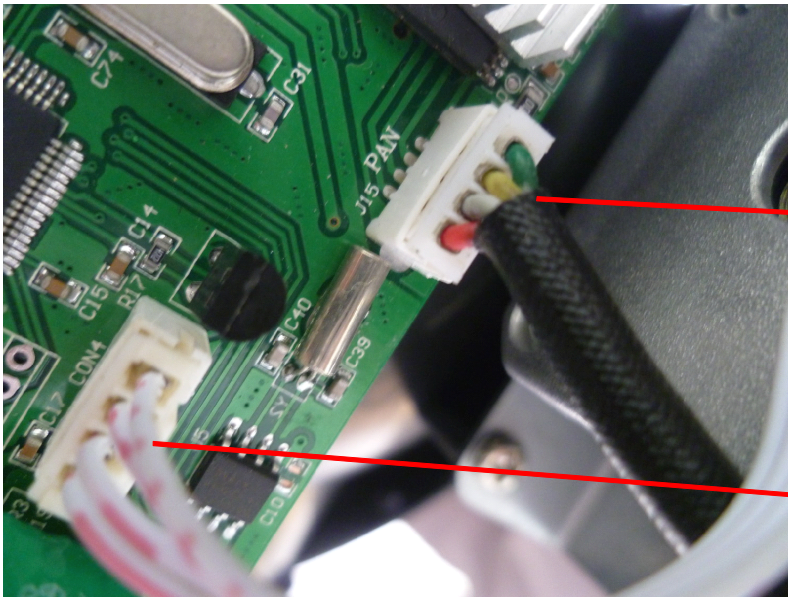




NO.2

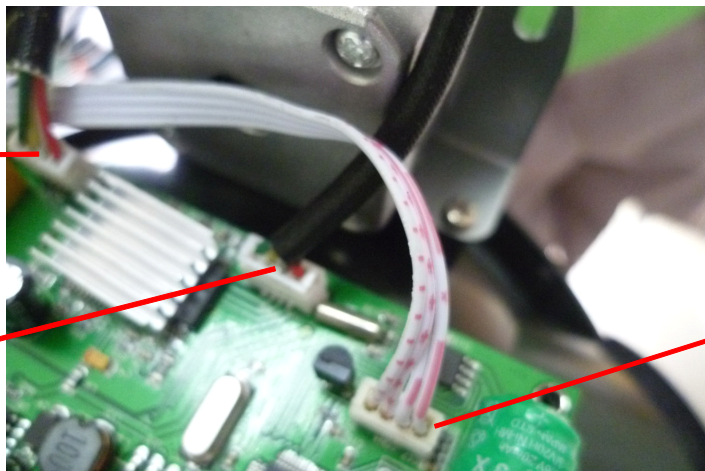
NO.3

NO.4



NO.6
by the side
of motor

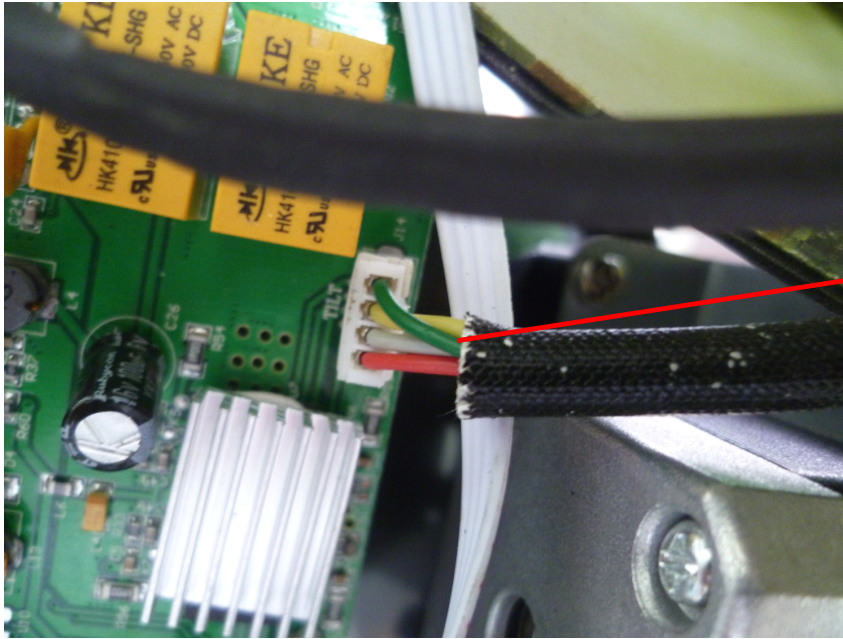
NO.5
Near to
NO.6



NO.7
Near to
NO.6

NO.6

NO.5
Near to
NO.6



NO.7
Near to
NO.6